

# UHF FEMALE-FEMALE BULKHEAD ADAPTER

## SM2103

### SPECIFICATIONS

**ELECTRICAL:**

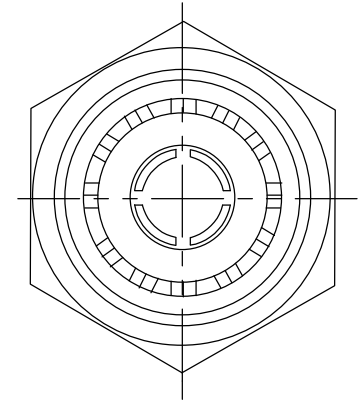
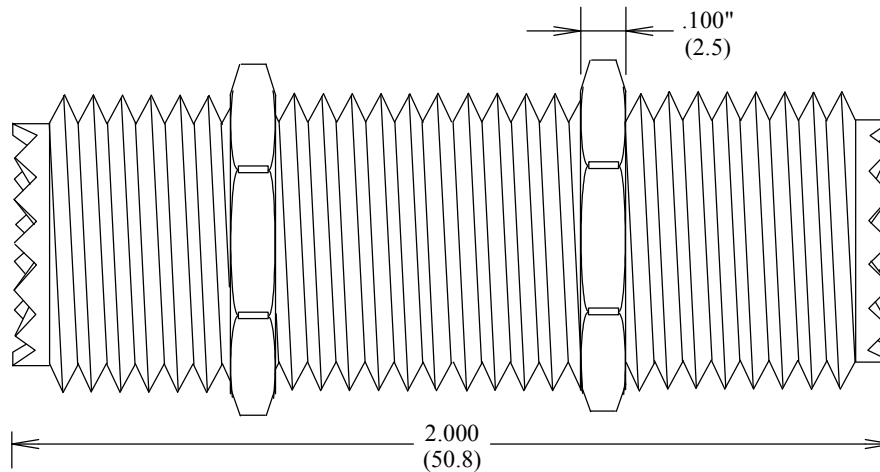
FREQUENCY: 0-300 MHZ  
WORKING VOLTAGE: 500 VRMS @ SEA LEVEL

**MATERIALS:**

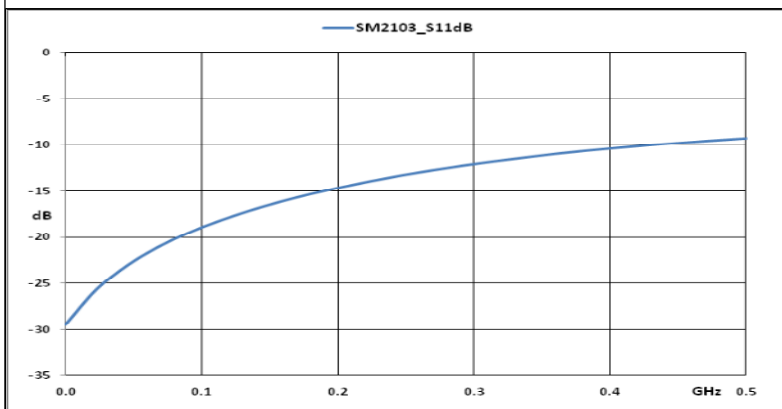
BODY: NICKEL PLATED BRASS  
CONTACT: SILVER PLATED BRASS

**MECHANICAL:**

ROHS COMPLIANT



MEASUREMENTS BELOW ARE TYPICAL



## FAIRVIEW MICROWAVE

ALLEN, TX 75013 [WWW.FAIRVIEWMICROWAVE.COM](http://WWW.FAIRVIEWMICROWAVE.COM)

TITLE

UHF FEMALE-FEMALE  
BULKHEAD ADAPTER

SIZE

A

CAGE CODE

3FKR5

DWG NO

SM2103

REV

A

ALL DIMENSIONS IN inches(MM) Typical

SCALE

SHEET