

## N Male to N Female Adapter

Type N male to type N female adapter part number SM4001 from Fairview Microwave is in-stock and ships same day. This Fairview type N to type N adapter has a male to female gender configuration. SM4001 type N male to type N female adapter operates to 12.4 GHz. The Fairview Microwave RF adapter provides good VSWR of 1.5:1 maximum.

RF adapters can be used to enable connections between two connector types that would otherwise not mate. Certain RF adapter configurations can also be used to protect connectors on expensive equipment where the number of connect and disconnect cycles is high. An RF, microwave, or millimeter wave adapter is connected to the equipment and the commonly changed connection is made with the adapter which can be easily replaced when it wears out after high usage; such adapters are referred to as connector savers. Fairview Microwave also offers bulkhead, panel mount, hermetically sealed, reverse polarity, and isolated ground adapter varieties to serve all of your RF, microwave and millimeter wave needs.

### Electrical Specifications

Description	Min	Typ	Max	Units
Frequency Range	DC		12.4	GHz
VSWR			1.5:1	
Operating Voltage (AC)			1,000	Vrms
DWV (AC)			2,500	Vrms

### Specifications by Frequency

Description	F1	F2	F3	F4	F5	Units
Frequency Range	DC to 6	6 to 11	11 to 12.4			GHz
VSWR, Max	1.2:1	1.4:1	1.5:1			

Electrical Specification Notes:  
Values at 25°C, sea level.

### Mechanical Specifications

<b>Size</b>	
Length	1.46 in [37.08 mm]
Width	0.83 in [21.08 mm]
Height	0.83 in [21.08 mm]
Weight	0.10803 lbs [49 g]

Description	Connector 1	Connector 2
Type	N Male	N Female
Polarity	Standard	Standard



### Configuration:

- N Male Connector 1
- N Female Connector 2
- 50 Ohms
- Straight Body Geometry

### Features:

- VSWR of 1.5:1 max up to 12.4 GHz
- 1.3  $\mu$ m minimum contact plating
- Gold Plated Brass Contact

### Applications:

- Connector Saver
- General Purpose Test

Fairview Microwave  
1130 Junction Dr. #100  
Allen, TX 75013  
Tel: 1-800-715-4396 / (972) 649-6678  
Fax: (972) 649-6689  
[www.fairviewmicrowave.com](http://www.fairviewmicrowave.com)  
[sales@fairviewmicrowave.com](mailto:sales@fairviewmicrowave.com)

## Material Specifications

Description	Connector 1	Connector 2
Type	N Male	N Female
Contact Material	Brass	Beryllium Copper
Contact Plating	Gold	Gold
Contact Plating Spec.	1.3 $\mu\text{m}$ minimum	1.3 $\mu\text{m}$ minimum
Insulation Material	PTFE	PTFE
Outer Contact Material		Brass
Outer Contact Plating		Nickel
Body Material	Brass	
Body Plating	Nickel	
Coupling Nut Material	Brass	
Coupling Nut Plating	Nickel	

## Environmental Specifications

### Temperature

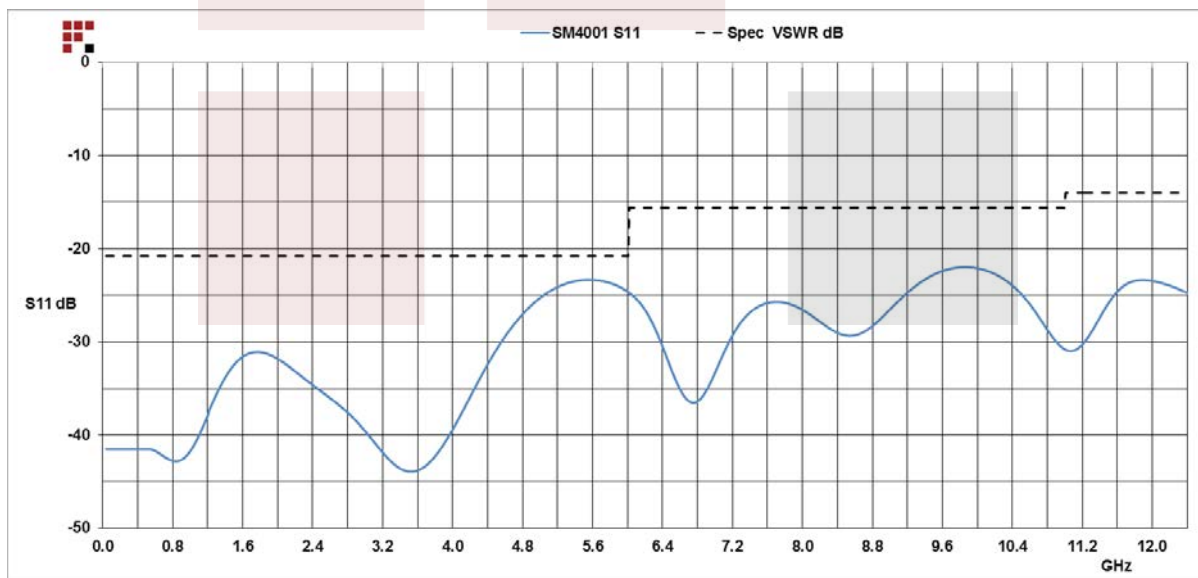
Operating Range -45 to +120 deg C

## Compliance Certifications (see [product page](#) for current document)

## Plotted and Other Data

Notes:

## Typical Performance Data



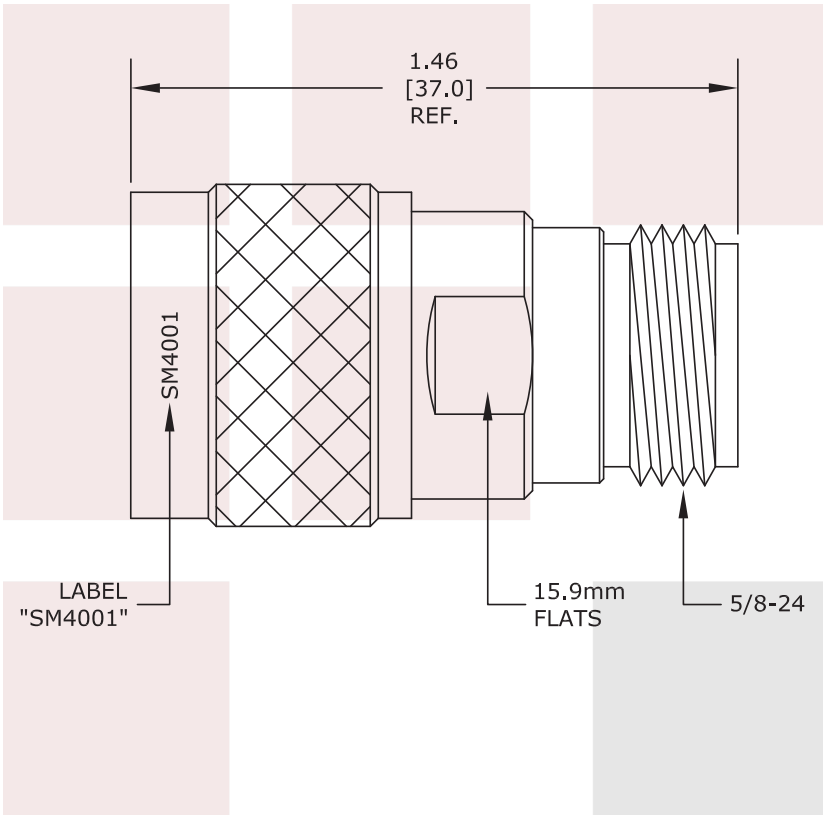
N Male to N Female Adapter from Fairview Microwave is in-stock and available to ship same-day. All of our RF/microwave products are available off-the-shelf from our ISO 9001:2008 certified facilities in Allen, Texas. Fairview Microwave is RF on-demand.

For additional information on this product, please click the following link: [N Male to N Female Adapter SM4001](#)

URL: <https://www.fairviewmicrowave.com/n-male-n-female-adapter-sm4001-p.aspx>

The information contained in this document is accurate to the best of our knowledge and representative of the part described herein. It may be necessary to make modifications to the part and/or the documentation of the part, in order to implement improvements. Fairview Microwave reserves the right to make such changes as required. Unless otherwise stated, all specifications are nominal. Fairview Microwave does not make any representation or warranty regarding the suitability of the part described herein for any particular purpose, and Fairview Microwave does not assume any liability arising out of the use of any part or documentation.





FAIRVIEW MICROWAVE INC. ALLEN, TX 75013 WWW.FAIRVIEWMICROWAVE.COM		NOTES: 1. UNLESS OTHERWISE SPECIFIED ALL DIMENSIONS ARE NOMINAL. 2. ALL SPECIFICATIONS ARE SUBJECT TO CHANGE WITHOUT NOTICE AT ANY TIME. 3. DIMENSIONS ARE IN INCHES [mm].			
TITLE N Male to N Female Adapter	DWG NO SM4001		CAGE CODE 3FKR5		
	CAD FILE 111815	SHEET	SCALE N/A	SIZE A	150