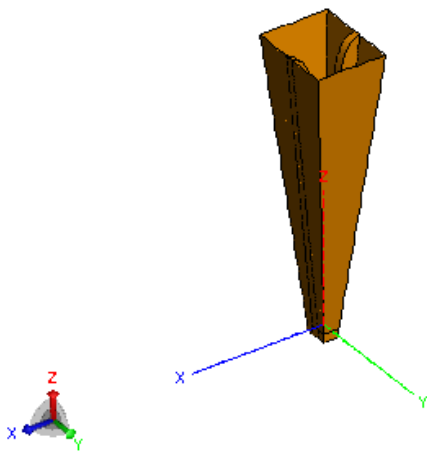


Horn Antenna

S17010-495



Technical Data

| | | |
|-------------------|-------------------------|----------------|
| Electrical | Frequency range | 6 GHz – 18 GHz |
| | Nominal input impedance | 50 Ω |
| | VSWR | 2. : 1 (max.) |
| | RF input power | 1 kW |
| | Gain | 16-21 dBi |
| | RF connector | WRD650 |
| | Mechanical | Size |

Electrical Data (based on simulations)

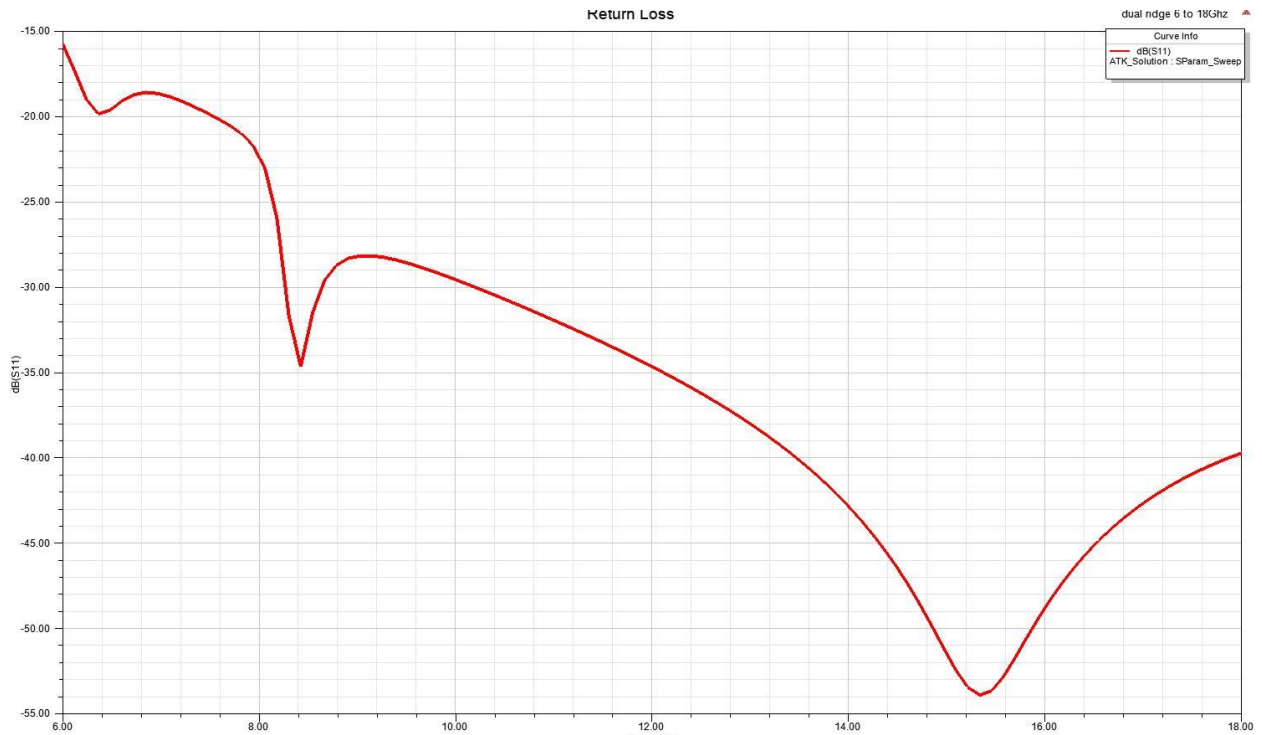


Fig. 1: Return loss

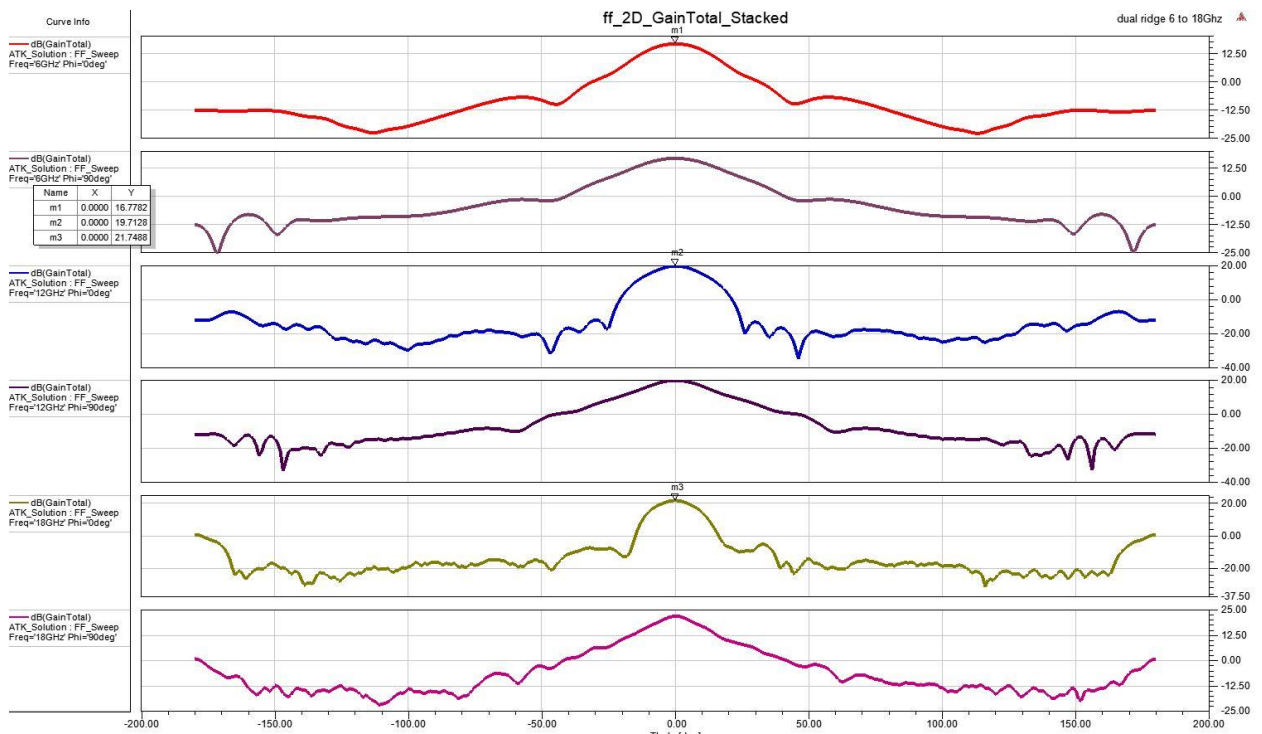


Fig. 2: Gain

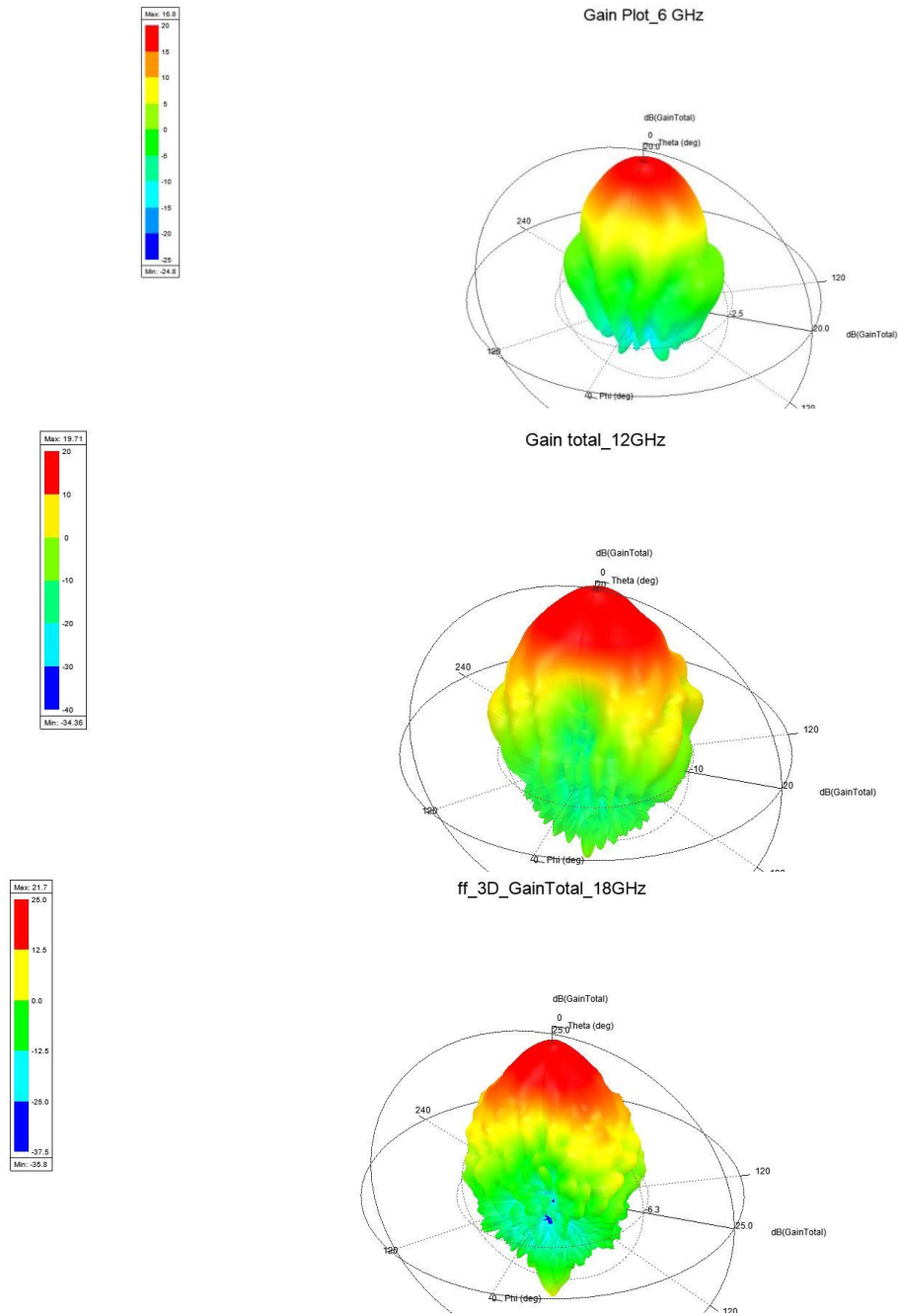


Fig. 3: Pattern 6, 12, 18 GHz