

VNA Master™

Handheld Vector Network Analyzer + Spectrum Analyzer

MS2026C MS2027C MS2028C
 5 kHz to 6 GHz 5 kHz to 15 GHz 5 kHz to 20 GHz Vector Network Analyzer

MS2036C MS2037C MS2038C
 5 kHz to 6 GHz 5 kHz to 15 GHz 5 kHz to 20 GHz Vector Network Analyzer
 9 kHz to 9 GHz 9 kHz to 15 GHz 9 kHz to 20 GHz Spectrum Analyzer

The Ultimate Handheld Vector Network + Spectrum Analyzer



VNA Master™ MS202xC/3xC Features

Overview

Introduction

In any field, the title "Grand Master" suggests the ultimate level of skill, experience, accomplishment and recognition. The VNA Master™ MS202xC/3xC series truly embodies this distinction among Vector Network Analyzers, offering unmatched performance in a handheld solution for 2-port, 2-path measurements, anytime, anywhere.

The VNA Master specifically addresses complex cable, waveguide and antenna measurement needs in the field with accurate, vector corrected 2-port magnitude, phase, and Time or Distance Domain measurements. The MS203xC models also offer a high-performance spectrum analyzer with ultra-low noise floor. Based on Anritsu's industry-leading handheld platform, the VNA Master offers unmatched measurement breadth, depth, and precision; reducing the number of different tools needed to analyze modern communication systems on land, sea, air and in space.



Global Communications



National Defense

Vector Analyzer Key Features

- True 2-Path 2-Port fully-reversing VNA; measures and displays all S-parameters with a single connection.
- 5 kHz to 6/15/20 GHz; the industry's first 20 GHz handheld VNA
- Ultra-fast 350 μ sec/data point sweep speed, ideal for filter tuning with ultimate flexibility in the number of points from 2 to 4001
- 12-term error correction algorithm
- Vector Voltmeter option, ideal for cable phase matching
- Time Domain option for precise Time or Distance Domain diagnostics, includes Gated Time Domain, LP Processing, and Phasor Impulse mode

+ Spectrum Analyzer Key Features

- 9 kHz to 9/15/20 GHz
- Detectors: Peak, Negative, Sample, Quasi-peak, and RMS
- Markers: 6, each with a Delta Marker, or 1 Reference with 6 Deltas
- Interference Analyzer Option: Spectrogram, Signal Strength, RSSI
- AM/FM/PM Modulation Analyzer Option: Carrier Power, Center Frequency, Occupied Bandwidth, Audio Waveform & Spectrum, Deviation, SINAD, THD

Handheld VNA Master platform Key Features

- High-resolution, intuitive Graphical User Interface (GUI)
- Portable < 4.8 kg (10.5 lbs) and battery-powered – replaces bulky benchtop VNAs – no need for instrument carts or AC generators when working in the field!
- 8.4" daylight-viewable display offers hands-free operation while viewing measurement results
- Standard USB and Ethernet connectivity supports remote programming/control and data storage
- Available display selections of normal, high contrast, night vision, black & white, and invert colors
- Military-grade ESD protection
- Optional Secure Data Handling offers increased security features including Frequency Blanking capabilities

Standards Compliance

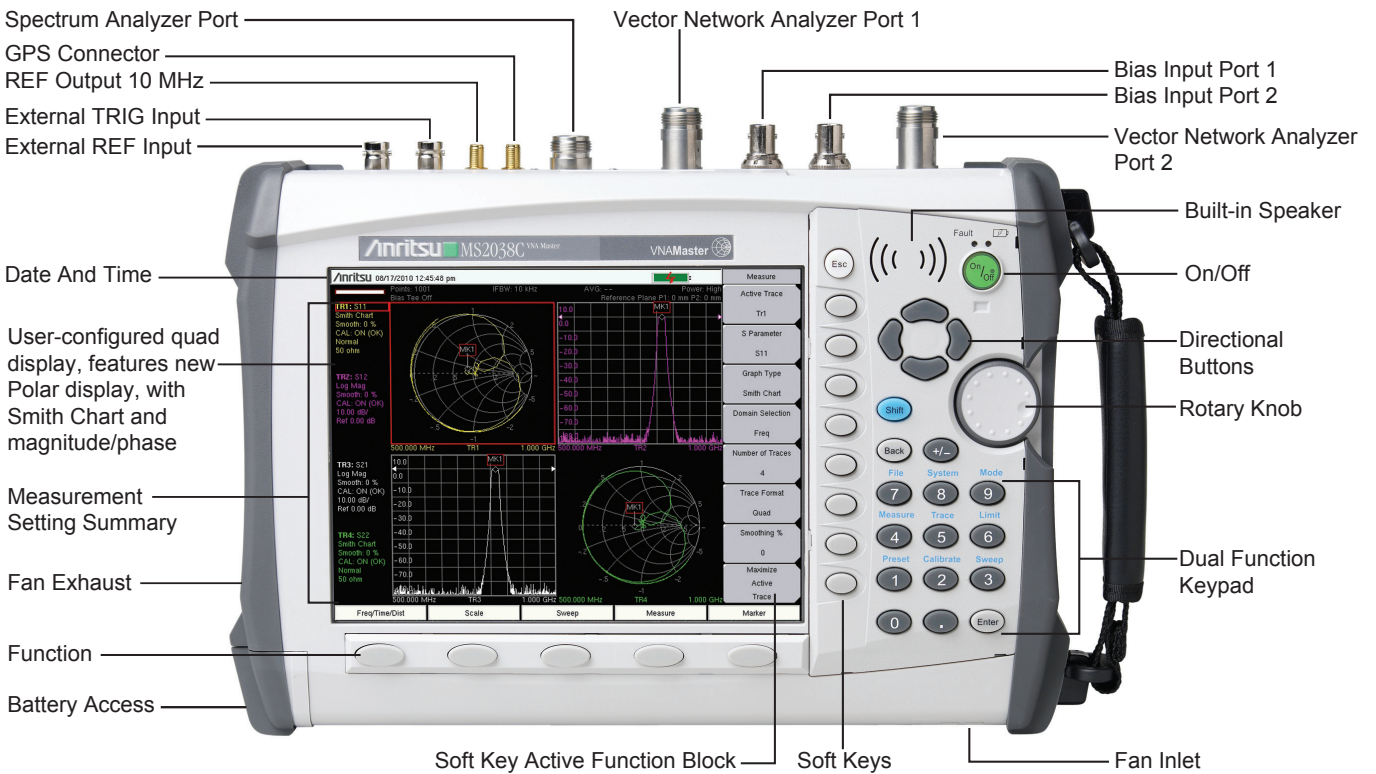
- MIL-PRF-28800F Class 2

VNA Master™ MS202xC/3xC Features

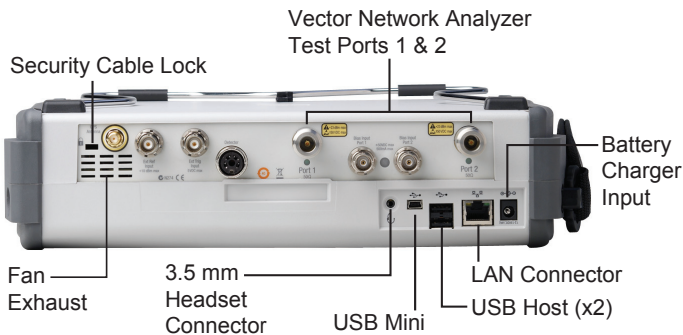
Overview (continued)

The dynamic range, speed, accuracy and compact form factor of the VNA Master are ideal for demanding field use situations including aerospace & defense, SATCOM, commercial wireless backhaul, and research applications.

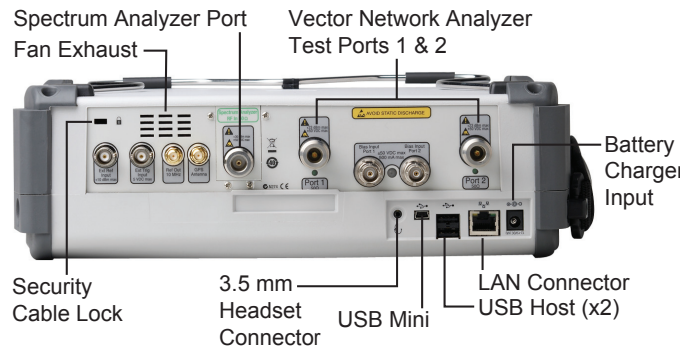
VNA Master Models Fully Reversing 2-Port	Vector Network Analyzer	Vector Network Analyzer with Spectrum Analyzer
MS2026C	5 kHz to 6 GHz	
MS2027C	5 kHz to 15 GHz	
MS2028C	5 kHz to 20 GHz	
MS2036C	5 kHz to 6 GHz	9 kHz to 9 GHz
MS2037C	5 kHz to 15 GHz	9 kHz to 15 GHz
MS2038C	5 kHz to 20 GHz	9 kHz to 20 GHz



MS202xC VNA MASTER



MS203xC VNA MASTER + SPECTRUM ANALYZER



Handheld size: 211 mm x 315 mm x 78 mm (8.3 in x 12.4 in x 3.1 in) (MS202xC)
 211 mm x 315 mm x 97 mm (8.3 in x 12.4 in x 3.8 in) (MS203xC)

Light weight: 4.5 kg (9.9 lbs) (MS202xC), 4.8 kg (10.5 lbs) (MS203xC)

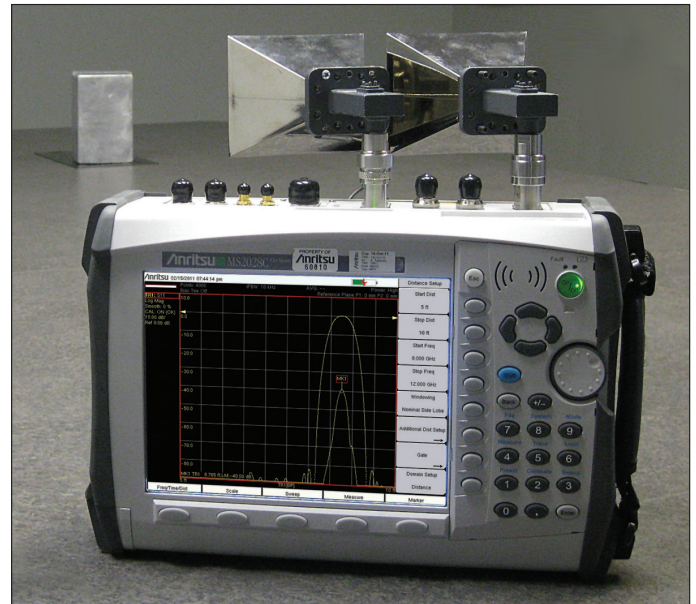
VNA Master™ MS202xC/3xC Features

Overview (continued)

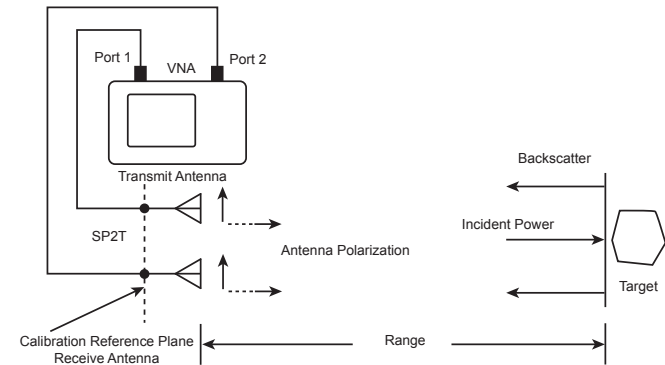
Application Spotlight: Measurement of Radar Cross Section (RCS) using the VNA Master MS202xC

Radar cross section (RCS) is the measure of an object's ability to reflect radar signals in the direction of the radar receiver. The VNA Master makes it easy to do RCS tests on the flight line or in the field.

A typical aircraft RCS measurement configuration using a VNA is shown here. The transmit antenna (connected to port 1 of the VNA) and receive antenna (connected to port 2 of the VNA) are positioned in the same plane as shown. The measurement target consists of the aircraft either mounted on a low reflection pedestal or a standalone on a flight line.

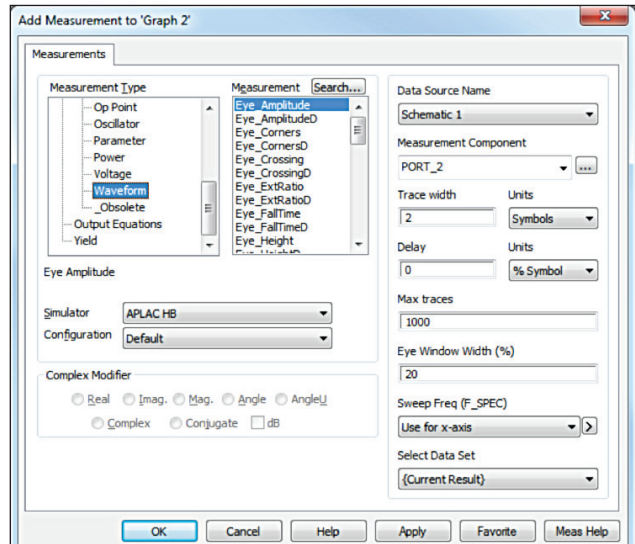


MS2028C with waveguide antenna



Block diagram for VNA measurement of RCS.

The target in this case is a known calibration standard which is positioned in the target area. The calibration standard reflection is identified and a range gate is placed on the calibration standard to remove all other reflections as shown here. The amplitude $S_{21(tstd)}$ of the calibration standard reflection is measured. The S_{21} measurement in dB corresponds to the known RCS (in square meters).



Target reflection from a 6" Diameter Calibration Sphere (RCS = 0.018 m²).

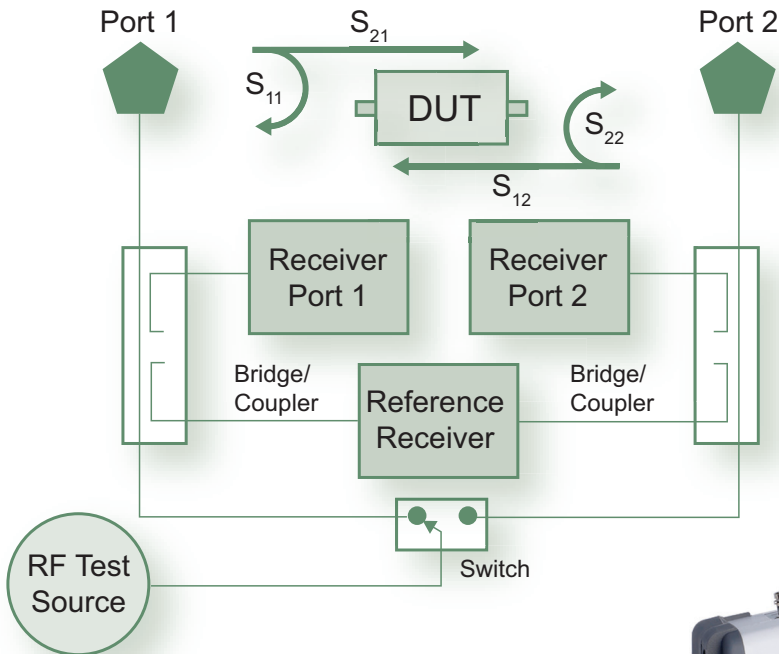
VNA Master™ MS202xC/3xC Features

Overview (continued)

MS202xC/3xC Highlights: Vector Network Analyzer

- The ultimate accuracy of a fully-reversing 2-port architecture
- Measures all four S-parameters with a single connection: S_{11} , S_{21} , S_{12} , and S_{22}
- Guaranteed 100 dB dynamic range to 3 GHz, 90 dB to 6 GHz, and 85 dB to 20 GHz for stop band filter rejection measurements
- World's fastest handheld display updates of 350 μ sec/data point for real-time filter tuning
- Polar and Smith Chart displays for added readout versatility
- Overlay screen formats for user-configured up-to-4 trace display
- Selectable IF Bandwidths of 10 Hz to 100 kHz – one calibration satisfies both fast sweeps and best dynamic range
- Arbitrary selection of 2 to 4001 data points for more overall resolution instead of save/recall multiple calibrations
- Improved frequency resolution of 1 Hz to 375 MHz, 10 Hz to 6 GHz, and 100 Hz to 20 GHz
- Available options for Vector Voltmeter, Integrated Bias Tee, Differential S-parameters (for balanced lines, SERDES channels, SATA, etc.), and Time Domain analysis

The VNA Master has a 2-port, 2-path architecture that automatically measures four S-parameters with a single connection. There are three receivers, so the forward sweep from Port 1 simultaneously yields S_{11} and S_{21} , and the reverse sweep from Port 2 simultaneously yields S_{22} and S_{12} . The four S-parameters for a two-port DUT require only two sweeps, both forward and reverse transmission. With just one connection, the VNA Master provides both precision measurements and hands-free operation.



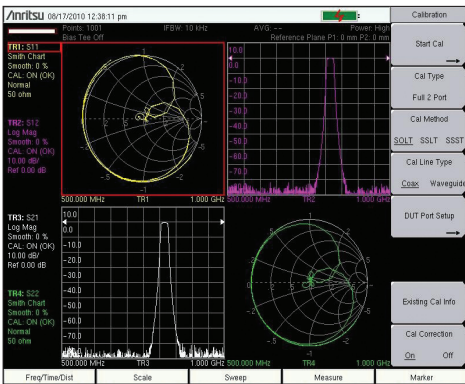
The functional block diagram of the VNA Master is shown in this illustration. The DUT is connected between Port 1 and Port 2 as shown. The switch alternates the source between forward and reverse transmission sweeps so all four S-parameters are measured with in a single connection. With three receivers, the MS202xC/3xC only needs two sweeps to measure all 4 S-parameters so real-time display updates in excess of 350 μ sec/point are available for tuning filters and isolating faults in the field.



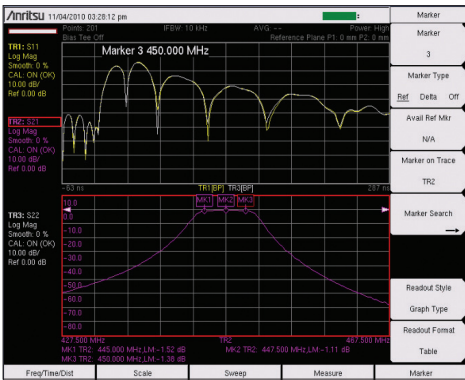
VNA Master™ MS202xC/3xC Features



2 Port Vector Network Analyzer



The VNA Master's unique quadrature display provides simultaneous display of all S-parameters and allows you to mix frequency, time, and distance domain displays as needed.



The VNA Master MS202xC/3xC is the first handheld which offers Time Domain analysis for field alignment of cavity filters and combiners.

2 Port Vector Network Analyzer

VNA Master features a 2-port Vector Network Analyzer to be able to test and verify the performance of feedline, filtering, and antenna components. This includes:

- Connectors
- Cables/Jumpers
- Antenna Isolators
- Multicouplers/Diplexers/Duplexers
- Tower Mounted Amplifiers
- Waveguides/Couplers/Feedhorns

2-port Transmission Measurements can help identify poor filter adjustment, antenna isolation, and degraded tower mounted amplifiers. The goal of these measurements is to maximize the system coverage and capacity with problem-free base stations.

Antenna System Failure Mechanisms

Maintenance is an on going requirement as antenna system performance can degrade at any point in time due to:

- Loose connectors
- Debris in waveguides
- Improperly weatherized connectors
- Pinched cables
- Poor grounding
- Corroded connectors
- Lightning strikes
- Strong winds misaligning antennas
- Water intrusion into cables and waveguides
- Bullet holes, nails, or rodent damage to the cable

Making Measurements Easier

The VNA Master provides features for making measurements easier to perform and for analyzing test results such as:

- Fast sweep speed, measurement point selection, and flexible display formats make it easy to view and adjust base station RF system performance
- High RF Immunity mode for testing in harsh RF environments
- Trace Overlay compares reference traces to see changes over time
- Limit Lines and Alarming for providing reference standards
- High and Low Power output selection to test tower-top components without climbing the tower
- Internal Bias-Tee to power up TMAs for testing when off-line
- GPS tagging of data to verify location of tests

Measurements

- VNA Measurements
 - Log Mag
 - SWR
 - Phase
 - Smith Chart
 - Group Delay
 - Linear Polar
 - Log Polar
 - Log Mag/2 (1 port cable loss)
 - Real
 - Imaginary
 - Real Impedance
 - Imaginary Impedance
- Windowing Functions in Distance Domain
 - Rectangular
 - Normal Side Lobe
 - Low Side Lobe
 - Minimum Side Lobe
- Domains
 - Frequency
 - Time
 - Distance
 - Frequency gated by time (FGT)
 - Frequency gated by distance (FGD)
- Low Pass Response
 - Impulse
 - Step
- Gate
 - Gate On/Off/Display
 - Start, Stop, Center, Span (Distance or Time)
 - Notch On/Off
 - Gate Shape Min/Nominal/Wide/Max

Calibration

- User-variable Data Points from 2 to 4001
- Full 2-port (S_{11} , S_{21} , S_{12} , S_{22})
- Full S_{11} or S_{22} (Open, Short, Load)
- FlexCal and/or Reciprocal Through
- Full S_{11} & S_{22}
- Reflection Response S_{11} , S_{22} , or S_{11} & S_{22}
- Transmission Response S_{21} , S_{12} , or S_{21} & S_{12}
- 1P2P S_{11} & S_{21} (Forward Path)
- 1P2P S_{22} & S_{12} (Reverse Path)

Sweep Functions

- IFBW
- Run/Hold, Single/Continuous/External
- RF Immunity (High/Low)
- Averaging/Smoothing
- Port Power (High/Low)

Trace Functions

- Save/Recall, Copy to Display Memory
- No Trace Math, Trace \pm Memory
- Trace Overlay

Marker Functions

- 1-8 Markers each with a Delta Marker
- Marker to Peak/Valley
- Marker to/Peak Valley between Markers
- Marker Table

Limit Line Functions

- Limit Lines
 - Single Limit
 - Multi-segment (41)
 - Limit Alarm
- Limit Line Edit
 - Frequency, Amplitude
 - Add/Delete Point
 - Next Point Left/Right
 - Move Limit

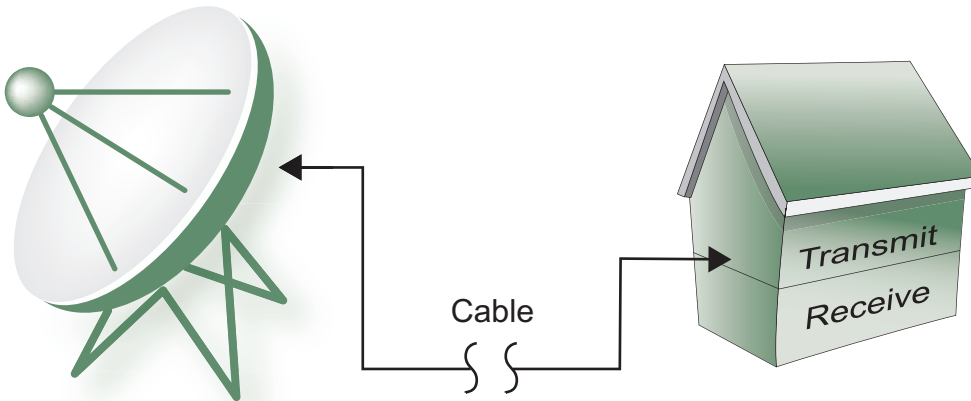
VNA Master™ MS202xC/3xC Features

Overview

MS203xC Highlights: VNA + Spectrum Analyzer

- Two-port vector network analysis to 6/15/20 GHz that supports both coaxial and waveguide connector types
- True 2-port, 12-term error correction calibrations — outstanding calibration stability
- Fully reversing architecture with three receivers support fast measurements of 350 μ sec/point
- Broadband Spectrum Analysis (9 kHz to 9/15/20 GHz - MS203xC models only)
- Optional Vector Voltmeter (VVM) mode
- Standard Distance Domain Analysis
- Available Options for Time Domain Analysis, Internal Bias Tee, Balanced/Differential Analysis, and Secure Data Storage
- Options for remote power sensors for higher accuracy power measurements
- Optional Interference Analysis
- Optional Indoor Coverage Mapping
- Optional Channel Scanner
- Optional AM/FM/PM Modulation Analyzer

The VNA Master™ MS202xC/3xC series is a compact handheld multi-function instrument that offers a portable yet powerful vector network analyzer, allowing you to do S-parameter analysis in the field — anytime, anywhere. The MS203xC models also offer a high-performance spectrum analyzer with industry-leading ultra-low noise floor. Based on Anritsu's 8th generation handheld platform, the VNA Master offers unmatched measurement breadth, depth, and precision; reducing the number of different tools needed to analyze modern communication systems in the field, on a tower, on a flightline, or in a vehicle.



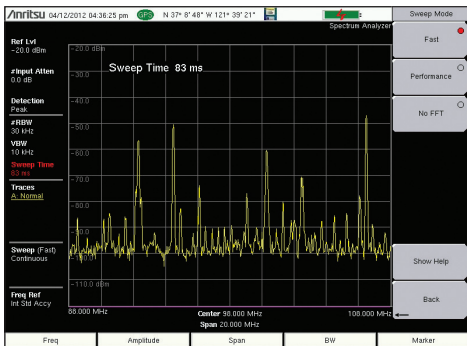
The RF and Microwave Spectrum is crowded with many wireless systems that provide critical services. In this illustration, a simplified block diagram of a typical wireless system is shown, which consists of antenna, cable, and transmit/receive capabilities.



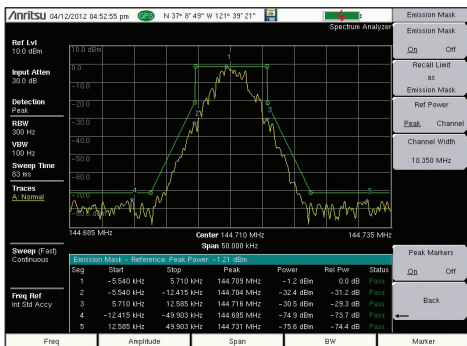
VNA Master™ MS202xC/3xC Features



MS203xC Highlights: VNA + Spectrum Analyzer



The spectrum analyzer mode in the VNA Master MS203xC offers fast sweep speeds for interference hunting intermittent signals.



The Spectrum Analyzer mode in the VNA Master MS203xC offers automated measurements including occupied bandwidth, adjacent channel power, and emission mask, as shown above. The mask can be quickly created using the standard limit line editor. The emission mask measurement function automatically moves the trace to match the peak of a modulated signal to conform to common mask standards.

Simple but Powerful

The goal of Spectrum Analyzer measurements is to accurately monitor, measure, and analyze RF signals and their environments. It finds rouge signals, measures carriers and distortion, and verifies base stations' signal performance. It validates carrier frequency and identifies desired and undesired signals.

The VNA Master MS203xC models feature the most powerful handheld spectrum analyzer in their class with unmatched performance in:

- Sensitivity
- Dynamic Range
- Phase Noise
- Frequency Accuracy
- Sweep Speed

The VNA Master offers full control over bandwidth and sweep settings, or can be set to automatically optimize for best possible trade-off between accuracy and speed.

GPS-Enhanced Frequency Accuracy

With GPS Option 31 the spectrum analyzer frequency accuracy (for MS203xC models) is improved to < 25 ppb (parts per billion) while the GPS is locked. After 3 minutes of GPS lock, the GPS antenna can be removed and the MS203xC will maintain 50 ppb frequency accuracy for up to 72 hours.

Rx Noise Floor Testing

The VNA Master can measure the receive noise floor on a base station's uplink channel using the channel power measurement. An elevated noise floor indicates interference that can lead to call blocking, denial of service, call drops, low data rates, and lowered system capacity.

Measurements

- One Button Measurements
 - Field Strength - in dBm/m² or dBmV/m
 - Occupied Bandwidth - 1% to 99% of power
 - Emission Mask
 - Channel Power - in specified bandwidth
 - ACPR - adjacent channel power ratio
 - AM/FM/SSB Demodulation - audio out only
 - C/I - carrier-to-interference ratio

Sweep Functions

- Sweep
 - Single/Continuous, Manual Trigger, Reset, Minimum Sweep Time
- Detection
 - Peak, RMS, Negative, Sample, Quasi-peak
- Triggers
 - Free Run, External, Video, Change Position, Manual

Trace Functions

- Traces
 - 1-3 Traces (A, B, C), View/Blank, Write/Hold
- Trace A Operations
 - Normal, Max Hold, Min Hold, Average, Number of Averages, (always the live trace)
- Trace B Operations
 - A → B, B ← C, Max Hold, Min Hold
- Trace C Operations
 - A → C, B ← C, Max Hold, Min Hold, A - B → C, B - A → C, Relative Reference (dB), Scale

Marker Functions

- Markers
 - 1-6 Markers each with a Delta Marker, or Marker 1 Reference with 6 Delta Markers
- Marker Types
 - Fixed, Tracking, Noise, Frequency Counter
- Marker Auto-Position
 - Peak Search, Sequential Peak (Right/Left), Peak Threshold %, To Channel, To Center, To Reference Level, Delta Marker to Span
- Marker Table
 - 1-6 markers' frequency & amplitude plus delta markers' frequency offset & amplitude

Limit Line Functions

- Limit Lines
 - Upper/Lower, Limit Alarm, Default Limit
- Limit Line Edit
 - Frequency, Amplitude, Add/Delete Point, Add Vertical, Next Point Left/Right
- Limit Line Move
 - To Current Center Frequency, By dB or Hz, To Marker 1, Offset from Marker 1
- Limit Line Envelope
 - Create, Update Amplitude, Number of Points (41), Offset, Shape Square/Slope
- Limit Line Advanced
 - Absolute/Relative, Mirror, Save/Recall

VNA Master™ MS202xC/3xC Features

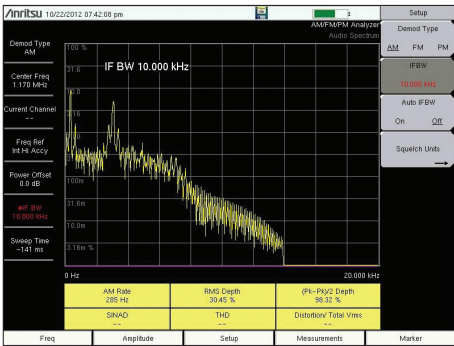


AM/FM/PM Analyzer (Option 0509)

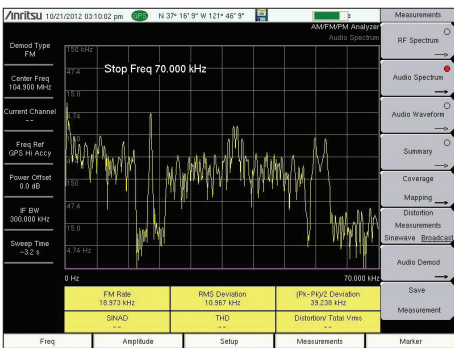
AM/FM/PM Analyzer

VNA Master comes with AM/FM/SSB audio demodulation as standard. By adding Option 509, the instrument becomes capable of measuring, analyzing, and displaying key modulation parameters of the RF Spectrum, Audio Spectrum, Audio Waveform and even includes a demodulation summary. Amplitude Modulation (AM), Frequency Modulation (FM), and Phase Modulation (PM) are fully supported.

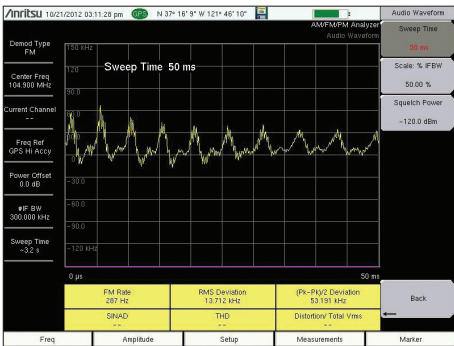
- The **RF Spectrum View** displays the spectrum with carrier power, frequency, and occupied BW.
- **Audio Spectrum** shows the demodulated audio spectrum along with the Rate, RMS deviation, Pk-Pk/2 deviation, SINAD, Total Harmonic Distortion (THD), and Distortion/Total.
- An **Audio Waveform** oscilloscope display is included with all three modulation formats that shows the time-domain demodulated waveform.
- The **Modulation Summary** display shows all of the RF and modulation parameters for each modulation format on one screen.
- **Zero Span IF Output** (Option 89) provides an IF Output signal centered at 140 MHz with bandwidth up to 32 MHz.



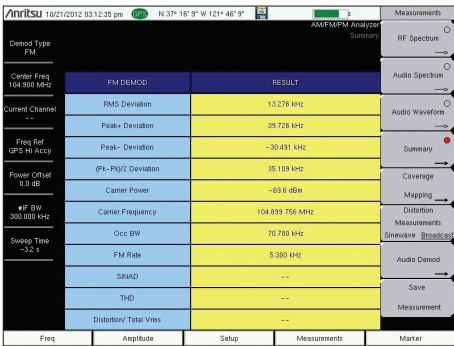
AM audio spectrum



FM with sub carriers



Demodulated audio waveform



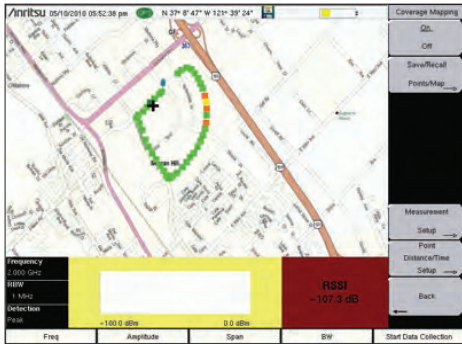
Modulation Summary

VNA Master™ MS202xC/3xC Features



Coverage Mapping (Option 431)

There is a growing demand for coverage mapping solutions. Anritsu's Coverage Mapping measurements option provides wireless service providers, public safety users, land mobile radio operators, and government officials with indoor and outdoor mapping capabilities

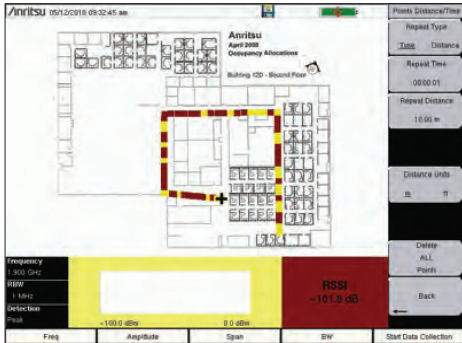


Outdoor Mapping

Outdoor Mapping

With a GPS antenna connected to the instrument and a valid GPS signal, the instrument monitors RSSI and ACPR levels automatically. Using a map created with Map Master, the instrument displays maps, the location of the measurement, and a special color code for the power level. The refresh rate can be set up in time (1 sec, minimum) or distance.

The overall amplitude accuracy coupled with the GPS update rate ensures accurate and reliable mapping results.



Indoor Mapping

Indoor Mapping

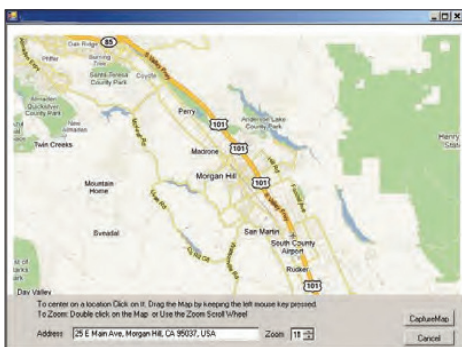
When there is no GPS signal valid, the Spectrum Master uses a start-walk-stop approach to record RSSI and ACPR levels. You can set the update rate, start location, and end location and the interpolated points will be displayed on the map.



Saved KML File

Export KML Files

Save files as KML or JPEG. Open kml files with Google Earth™. When opening up a pin in Google Earth, center frequency, detection method, measurement type, and RBW are shown on screen.



Create maps with Map Master

Map Master

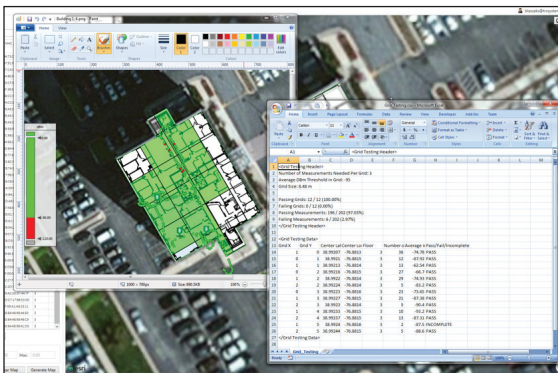
When there is no GPS signal valid, the Spectrum Master uses a start-walk-stop approach to record RSSI and ACPR levels. You can set the update rate, start location, and end location and the interpolated points will be displayed on the map.

VNA Master™ MS202xC/3xC Features

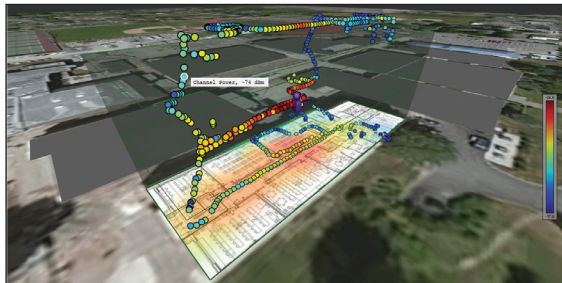
MA8100A Series TRX NEON Signal Mapper



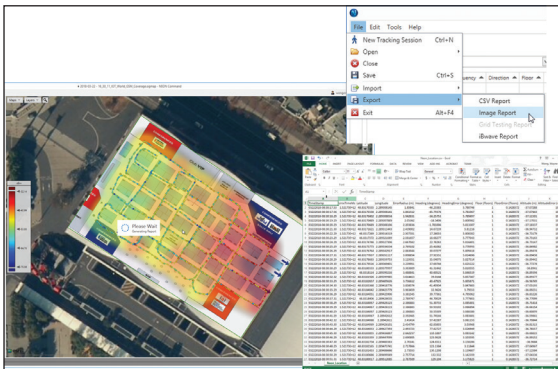
NEON Signal Mapping with Anritsu Handhelds



Support for NFPA Gridding Requirements



Automatically generate 3-D Heatmaps



Automatic Report Generation

MA8100A Series TRX NEON® Signal Mapper*

The most powerful 3D in-building coverage mapping tool specially for Anritsu Handheld Spectrum Analyzers

Anritsu's TRX NEON Signal Mapper, a 3D in-building coverage mapping solution, is compatible with all Anritsu handheld instruments with spectrum analyzer mode. Instruments supported include Spectrum Master, LMR Master, Site Master, BTS Master, Cell Master, and VNA Master.

The MA8100A-xxx consists of both hardware and software from TRX Systems, a 3rd party partner. The MA8100A-xxx consists of a TRX Systems NEON Tracking Unit, NEON Signal Mapper Software for Android devices, and NEON Command Software for a PC.

The TRX NEON Tracking Unit supports collection and processing of sensor data that delivers 3D location information. The Tracking Unit connects to the TRX NEON Signal Mapper application which is run on an Android device via a Bluetooth connection.

The TRX NEON Signal Mapper application provides an intuitive Android user interface enabling lightly trained users to map RF signals within buildings. Users can initialize their location, start/stop mapping and save mapping data to the cloud. RF data is captured by an Anritsu Handheld spectrum analyzer product and the data is sent to the Android device via a USB connection.

The TRX NEON Command Software, run on a PC, enables creation and visualization of 3D building maps and provides centralized access to the TRX NEON Cloud Service to access stored maps and measurement data.

Key Features and Benefits

Integrating NEON's capability to automatically collect geo-referenced test data with Anritsu handheld spectrum analyzer products saves valuable time and money by:

- Eliminating the need to manually perform "check-ins" at each test point by automatically calculating indoor location
- Providing vastly more data than is possible with manual processes by recording data with every step
- Removing typical data recording errors caused by "guesstimating" locations in large buildings through automatic indoor location and path estimation
- Delivering actionable data in areas not easily analyzed such as stairways and elevators by recording and referencing measurements in 3D
- Enabling quick analysis of signal coverage and faster problem resolution by delivering the industry's only geo-referenced 3D visualization
- Provides color-graded measurement results in 2D and 3D views. Measurement values can be seen by clicking on each point. A .csv file of all measurements is also provided.

*Android device and PC are NOT included in the MA8100A-xxx. Customers must purchase their own Android device and PC.

VNA Master™ MS202xC/3xC Features

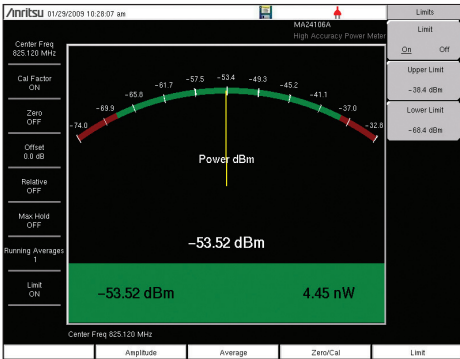


Power Meter

High Accuracy Power Meter (Option 19)



The VNA Master supports many different power measurements, including the channel scanner, high accuracy power meter, and channel power measurement.



High Accuracy Power Meter

PC Power Meter

These power sensors can be used with a PC running Microsoft Windows® via USB. They come with PowerXpert™ application, a data analysis, and control software. The application has abundant features, such as data logging, power versus time graph, big numerical display, and many more, that enable quick and accurate measurements.

High Accuracy Power Meter (Option 19)

Anritsu's high accuracy power meter option enables you to make high accuracy RMS measurements. This capability is perfect for measuring both CW and digitally modulated signals such as CDMA/EV-DO, GSM/EDGE, and W-CDMA/HSPA+. You can select from a wide range of USB sensors delivering better than ± 0.16 dB accuracy. An additional benefit of using the USB connection is that a separate DC supply (or battery) is not needed because the necessary power is supplied by the USB port.



Channel Scanner

Channel Scanner (Option 27)

The channel scanner option measures the power of multiple transmitted signals, making it very useful for simultaneously measuring channel power of up to 20 channels in GSM, TDMA, CDMA, W-CDMA, HSDPA, and public safety networks. You can select the frequencies or the scanned data to be displayed, either by frequencies or the channel number. And in the custom setup menu, each channel can be custom built with different frequency bandwidth, or with channels from different signal standards. With Script Master, scans can be automated for up to 1200 channels.

- MA24105A Inline High Power Sensor, 350 MHz to 4 GHz, +3 dBm to +51.76 dBm, True-RMS
- MA24106A High Accuracy RF Power Sensor, 50 MHz to 6 GHz, -40 dBm to +23 dBm, True-RMS
- MA24108A/18A/26A Microwave USB Power Sensor, 10 MHz to 8/18/26 GHz, -40 dBm to +20 dBm, True-RMS, Slot Power, Burst Average Power
- MA24208A/18A, Microwave Universal USB Power Sensor, 10 MHz to 8/18 GHz, -60 dBm to +20 dBm, True-RMS, Slot Power, Burst Average Power
- MA24330A/40A/50A, Microwave CW USB Power Sensor, 10 MHz to 33/40/50 GHz, -70 dBm to +20 dBm, Average Power



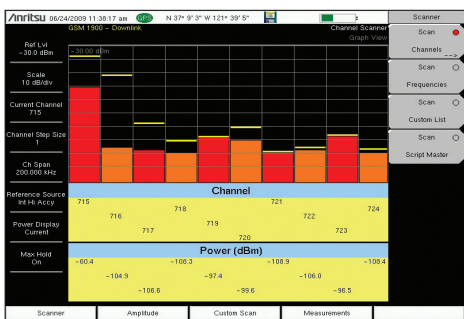
High Accuracy Power Sensors

VNA Master™ MS202xC/3xC Features



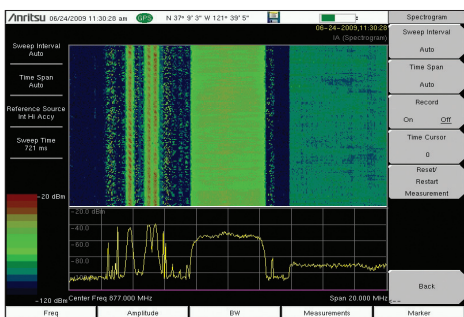
Interference Analyzer (Option 25)

Channel Scanner (Option 27)



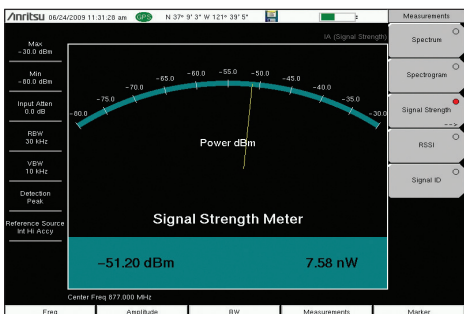
Channel Scanner

Works on any signal and is useful when looking for IM or harmonics. Can help spot signals widely separated in frequency that turn on and off together.



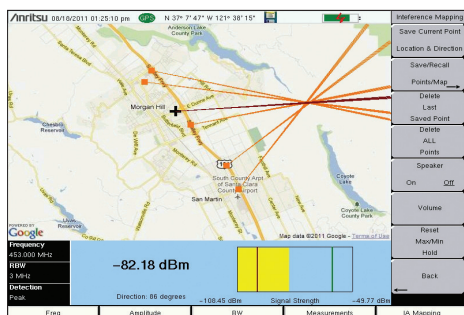
Spectrogram

For identifying intermittent interference and tracking signal levels over time for up to 72 hours with an external USB flash drive.



Signal Strength Meter

Can locate an interfering signal, by using a directional antenna and measuring the signal strength and by an audible beep proportional to its strength.



Interference Mapping

Eliminates the need to use printed maps and draw lines to triangulate location. Use on-screen maps generated with GPS coordinates with Map Master™.

Interference Analyzer (Option 25) Channel Scanner (Option 27)

Interference is a continuously growing problem for wireless network operators. Compounding the problem are the many sources that can generate interference such as:

- Intentional Radiators
- Unintentional Radiators
- Interference

Interference causes Carrier-to-Interference degradation, robbing the network of capacity. In many instances, interference can cause an outage to a sector, a cell, and/or neighboring cells. The goal of these measurements is to resolve interference issues as quickly as possible.

Monitoring Interference

The VNA Master offers many tools for monitoring intermittent interferers over time to determine patterns:

- Spectrogram
- Received Signal Strength Indicator
- Remote Monitoring over the Internet
- Save-on-Event – crossing a limit line

Master Software Tools for your PC features diagnostic tools for efficient analysis of the data collected during interference monitoring. These features include:

- Folder Spectrogram – creates a composite file of multiple traces for quick review
- Movie playback – playback data in the familiar frequency domain view
- Histogram – filter data and search for number of occurrences and time of day
- 3D Spectrogram – for in-depth analysis with 3-axis rotation viewing control

Identifying Interference

The VNA Master provides several tools to identify the interference – either from a neighboring wireless operator, illegal repeater or jammer, or self-interference:

- Signal ID (up to 12 signals at once)
- Signal Analyzer Over-the-Air Scanners
- Channel Scanner (up to 1200 channels, 20 at a time)

Locating Interference

Once interference has been identified, the Signal Strength Meter with its audible output beep coupled with a directional antenna makes finding the interference easier.

Interference Analyzer Measurements

- Spectrogram
- Signal Strength Meter
- Received Signal Strength Indicator (RSSI)
- Signal ID (up to 12 signals)
 - FM
 - GSM/GPRS/EDGE
 - W-CDMA/HSPA+
 - CDMA/EV-DO
 - Wi-Fi
- Spectrum
 - Field Strength – in dBm/m2 or dBmV/m
 - Occupied Bandwidth - 1% to 99% of power
 - Channel Power - in specified bandwidth
 - ACPR - adjacent channel power ratio
 - AM/FM/SSB audio monitor
 - C/I - carrier-to-interference ratio

Channel Scanner

- Scan
 - 20 channels at once, by frequency or channel
 - Noncontiguous channels
 - Different channel bandwidths in one scan
- Display
 - Current plus Max hold display
 - Graph View
 - Table View
- Script Master™
 - Up to 1200 Channels
 - Auto-repeat sets of 20 channels and total
 - Auto-save with GPS tagging

Interference Mapping

- Save Current Point with Location and Direction
- Save/Recall Points & Map
- Audible Output of RSSI
- Reset Max/Min Hold

VNA Master™ MS202xC/3xC Features



Distance Domain Analysis (Now Standard, formerly Option 501)

Distance Domain

Distance-to-Fault Analysis is a powerful field test tool to analyze cables for faults, including minor discontinuities that may occur due to a loose connection, corrosion, or other aging effects. By using Frequency Domain Reflectometry (FDR), the VNA Master sweeps a user-specified band of full power operational frequencies (instead of fast narrow pulses from TDR-type approaches) to more precisely identify discontinuities. The VNA Master converts S-parameters from frequency domain into distance (or time) domain on the horizontal display axis, using a mathematical computation called Inverse Fourier Transform. Connect a reflection at the opposite end of the cable and the

discontinuities appear versus distance to reveal any potential maintenance issues. When access to both ends of the cable is convenient, a similar time domain analysis is available on transmission (S_{21}) measurements.

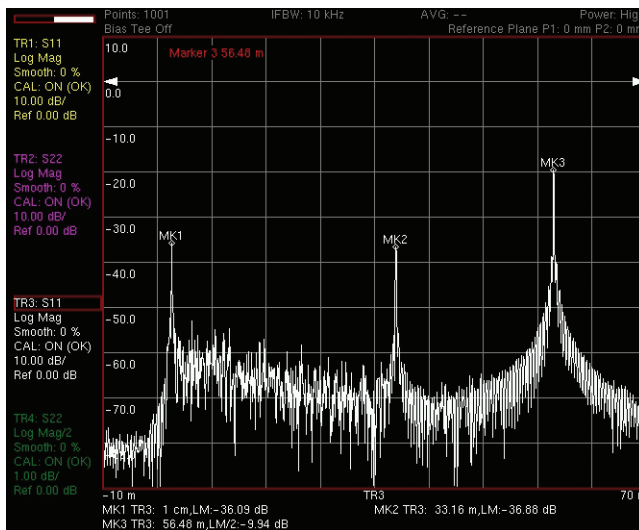
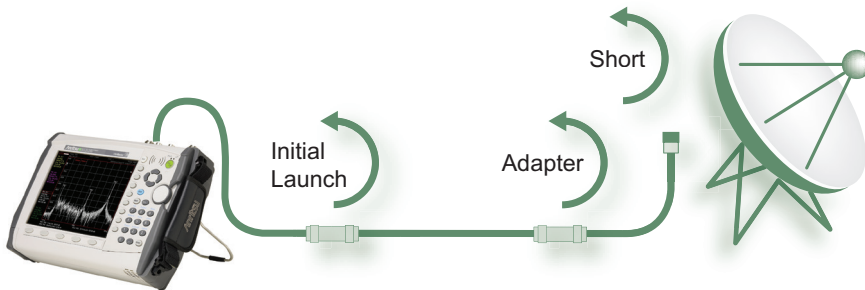
Distance Domain will improve your productivity with displays of the cable in terms of discontinuities versus distance. This readout can then be compared against previous measurements (from stored data) to determine whether any degradations have occurred since installation (or the last maintenance activity). More importantly, you will know precisely where to go to fix the problem and so minimize or prevent downtime of the system.

Measurements

- DTF Return Loss
- DTF Insertion Loss

Setup Parameters

- Start Distance
- Stop Distance
- Start Frequency (FDR)
- Stop Frequency (FDR)
- Windowing: Rectangular, Nominal Side Lobe, Low Side Lobe, Minimum Side Lobe
- Propagation Velocity
- Cable Loss
- Units: meters or feet
- Distance Info display

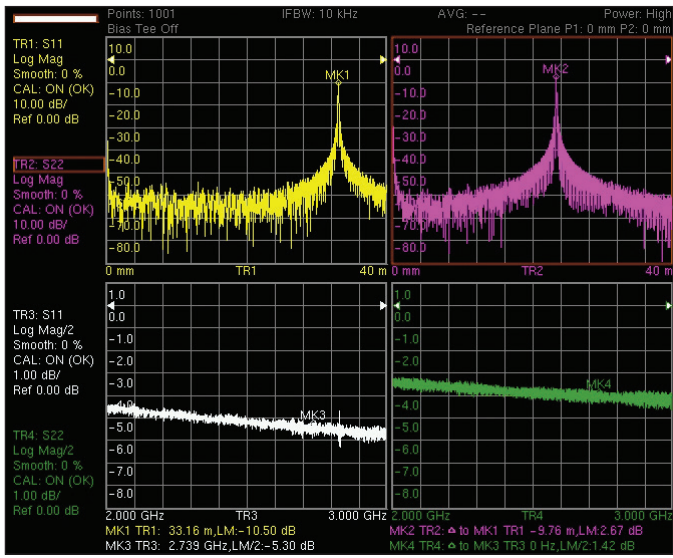


Distance-to-Fault Analysis

This illustration shows a typical cable measurement scenario with an adapter between the near and far end of the cable. With a short on the far end, the VNA Master can convert frequency domain results into corresponding distance-domain readout. Moving left to right, we can see the initial launch (MK1), the intermediate adapter (MK2), and the short at the far end of the cable (MK3). It is easy to interpret the discontinuities as normal or faults by simply looking at the location and amplitude of the peaks. Since the short shows as -20 dB, this means that the one-way cable loss must be 10 dB.



Time Domain (Option 2)



Optional time domain analysis offers trace selections for the horizontal axis in frequency, distance, or time scales. This screen simultaneously shows distance-to-fault and cable loss (Log Mag|S₁₁| / 2) for S₁₁ and S₂₂.

Time Domain Analysis (Option 0002)

The VNA Master can display the S-parameter measurements in the time or distance domain using this popular analysis mode. The broadband frequency coverage coupled with 4001 data points means you can measure discontinuities both near and far with clarity unprecedented in a hand held tool. With this option, you can simultaneously view S-parameters in frequency, time, and distance domain to quickly identify faults in the field. Further enhance the Distance-to-Fault (DTF) results by compensating for loss and relative propagation velocity (for cables) or cutoff frequency and dispersion (for waveguides).

Side lobes are inherent by-products of time domain analysis. They can distort DTF results, especially when simultaneously measuring both small and large discontinuities in close proximity to each other. To more easily interpret DTF results, the VNA Master offers the following windowing selections to help optimize results (in increasing side lobe reduction order): rectangular, nominal, low, and minimum side lobe. These windowing selections trade-off side lobe level with resolution by smoothing out sharp transitions caused by the selected start and stop frequencies. LP Processing and Gated Time Domain functions have been added to offer more user choice on display clarity.

VNA Master™ MS202xC/3xC Features

Secure Data Operation (Option 7)

K(f) Test Port Connectors (Option 11)



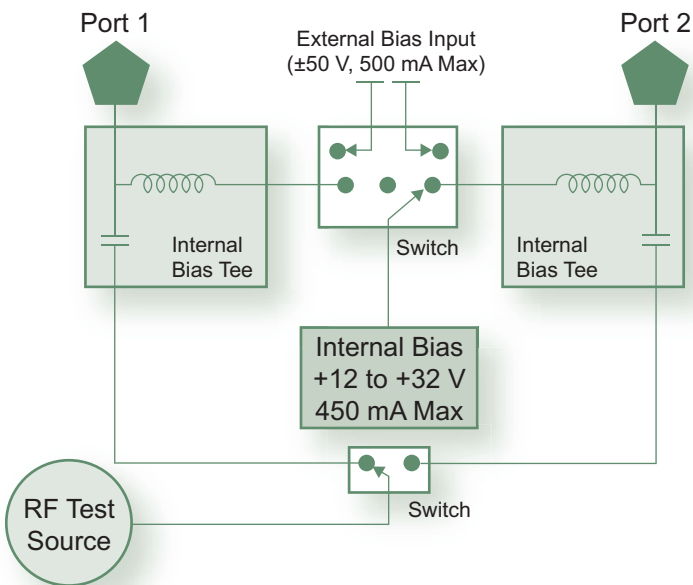
For secure environments, VNA Master will only use external USB memory as an external drive for storage when configured with Option 0007. Internal memory is disabled for data storage.

Secure Data Operation (Option 0007)

For highly secure data handling requirements, this software option prevents the storing of measurement setup or data information onto any internal file storage location. Instead, setup and measurement information is stored ONLY to the external USB memory location. A simple factory preset prepares the VNA Master for transportation while the USB memory remains behind in the secure environment. Once configured for secure data operation, the VNA Master cannot be switched between secure and non-secure operation by the user.

Bias Tee (Option 0010)

For tower mounted amplifier tests, the MS202xC/3xC series (when configured with the optional internal bias tees) can supply both DC and RF test signals on the center conductor of the cable during measurements. In addition, the VNA Master can supply internal voltage control from +12V to +32V in 0.1V steps up to 450 mA. To extend battery life, an external power supply can substitute for the internal supply by using the external bias inputs instead. Both test ports can be configured to supply voltage via this integrated bias tees option.



The VNA Master offers optional integrated bias tee for supplying DC plus RF to the DUT as shown in the simplified block diagram. Connectivity is also provided for external supply (instead of internal) to preserve battery consumption.

K(f) Test Port Connectors (Option 0011)



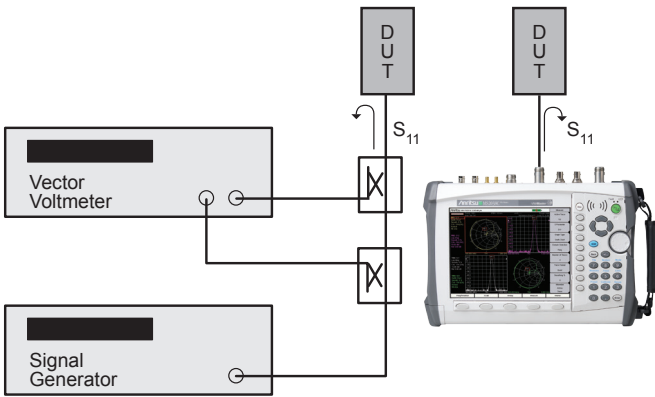
Optional K(f) test port connectors are available for precision measurements to 20 GHz.

VNA Master™ MS202xC/3xC Features

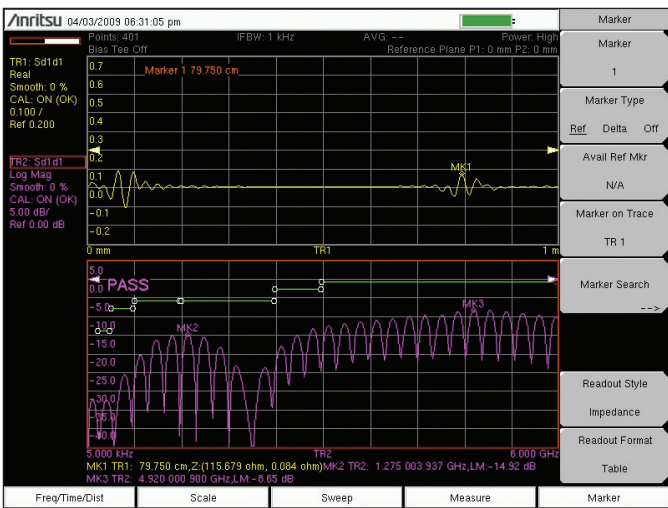


Vector Voltmeter (Option 15)

GPS Receiver (Option 31)



Compared to the Vector Voltmeter setup, this side-by-side illustration shows how VNA Master is a completely self-contained turnkey solution with integrated source, receivers, and couplers for phase matching cables.



This display shows a full 6 GHz sweep of a balanced pair of coax lines. If you add the Time Domain option 0002, you can get DTF diagnostics too. Use a full 2-port calibration to conduct one-port differential measurements of S_{d1d1} . Similar to other S-parameters, you can view S_{d1d1} in the frequency, time, or distance domain for signal integrity measurements anytime, anywhere.

Vector Voltmeter (Option 0015)

A phased array system relies on phase matched cables for required performance. For this class of application, the VNA Master offers this special software mode to simplify phase matching cables at a single frequency.

The similarity between the popular vector voltmeter method (using bench instruments) and the VNA Master's Vector Voltmeter application will ensure minimal training is required to phase match cables. Operation is as simple as configuring the display for absolute or relative measurements. The easy-to-read large fonts show either reflection or transmission measurements using impedance, magnitude, or VSWR readouts. For instrument landing system (ILS) or VHF Omni-directional Range (VOR) applications, a table view improves operator efficiency when phase matching up to twelve cables.

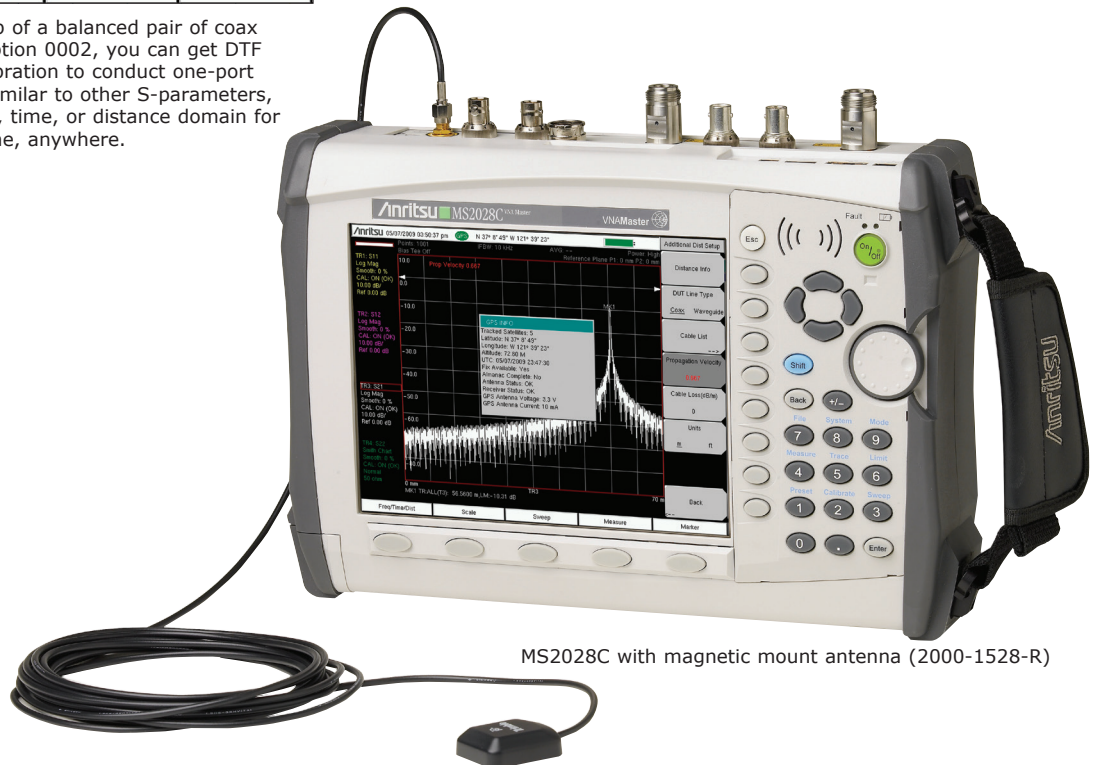
The MS202xC/3xC VVM solution is superior because the signal source is included internally, precluding the need for an external signal generator.

Balanced/Differential S-Parameters, 1-port (Option 0077)

Verifying the performance and identifying discontinuities in differential cables is now possible with the VNA Master. After a full two-port calibration, connect your differential cable directly to the two test ports and reveal the S_{d1d1} performance, which is essentially differential return loss. With optional time domain, you can convert frequency sweeps to distance. This capability is especially valuable for applications in high data rate cables where balanced data formats are used to isolate noise and interference.

GPS Receiver (Option 0031)

Built-in GPS provides location information (latitude, longitude, altitude) and Universal Time (UT) information for storage along with trace data so you can later verify that measurements were taken at the right location. The GPS option requires a separately ordered magnetic mount antenna (2000-1528-R) with a 15 foot (~ 5m) cable to mount outside on a metallic surface.



MS2028C with magnetic mount antenna (2000-1528-R)

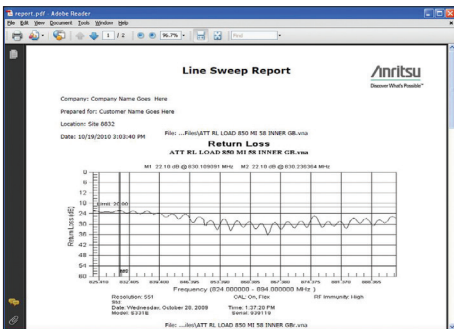
VNA Master™ MS202xC/3xC Features

Line Sweep Tools and Master Software Tools (for your PC)



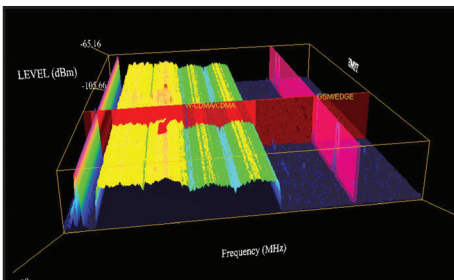
Trace Validation

Marker and Limit Line presets allow quick checks of traces for limit violations.



Report Generation

Create reports with company logo, GPS tagging information, calibration status, and serial number of the instrument for complete reporting.



3D Spectrogram

For in-depth analysis with 3-axis rotation viewing, threshold, reference level, and marker control. Turn on Signal ID to see the types of signals.

Line Sweep Tools™

Line Sweep Tools increases productivity for people who deal with dozens of Cable and Antenna traces, or Passive Inter-Modulation (PIM) traces, every day.

User Interface

Line Sweep Tools has a user interface that will be familiar to users of Anritsu's Hand Held Software Tools. This will lead to a short learning curve.

Marker and Limit Line Presets

Presets make applying markers and a limit line to similar traces, as well as validating traces, a quick task.

Renaming Grid

A renaming grid makes changing file names, trace titles, and trace subtitles from field values to those required for a report much quicker than manual typing and is less prone to error.

Report Generator

The report generator will generate a professional looking PDF of all open traces with additional information such as contractor logos and contact information.

Line Sweep Features

Presets

7 sets of 8 markers and 1 limit line
Next trace capability

File Types

Input: HHST DAT, VNA, and some MNA measurements.
Return Loss (VSWR), Cable Loss, DTF-RL,
DTF-VSWR, PIM
Output: LS DAT, MNA, VNA, CSV, PNG, BMP, JPG, PDF

Report Generator

Logo, title, company name, customer name,
location, date and time, filename, PDF, HTML,
all open traces

Tools

Cable Editor
Distance to Fault
Measurement calculator
Signal Standard Editor
Renaming Grid

Interfaces

Serial, Ethernet, USB

Capture Plots to

Screen, Database, DAT files, JPEG, Instrument

Master Software Tools™

Master Software Tools (MST) is a powerful PC software post-processing tool designed to enhance the productivity of technicians using spectrum analyzers .

Folder Spectrogram

Folder Spectrogram – creates a composite file of up to 15,000 multiple traces for quick review, also create:

- Peak Power, Total Power, and Peak Frequency plotted over time
- Histogram – filter data and plot number of occurrences over time
- Minimum, Maximum, and Average Power plotted over frequency
- Movie playback – playback data in the familiar frequency domain view
- 3D Spectrogram – for in-depth analysis with 3-axis rotation viewing control

Master Software Tools Features

Spectrum Analyzer Database Management

Full Trace Retrieval
Trace Catalog
Group Edit
Trace Editor

Data Analysis

Trace Math and Smoothing
Data Converter
Measurement Calculator

Folder Spectrogram

Folder Spectrogram – 2D View
Video Folder Spectrogram – 2D View
Folder Spectrogram – 3D View

List/Parameter Editors

Traces
Antennas, Cables, Signal Standards
Pass/Fail
Languages

VNA Master™ MS202xC/3xC Ordering Information

Ordering Information

VNA Master™ Handheld Vector Network Analyzer + Spectrum Analyzer

Includes standard three-year warranty (one year on battery) and Certificate of Calibration and Conformance.

MS2026C	MS2027C	MS2028C	MS2036C	MS2037C	MS2038C	Description
5 kHz to 6 GHz	5 kHz to 15 GHz	5 kHz to 20 GHz	5 kHz to 6 GHz 9 kHz to 9 GHz	5 kHz to 15 GHz 9 kHz to 15 GHz	5 kHz to 20 GHz 9 kHz to 20 GHz	Vector Network Analyzer Spectrum Analyzer
MS2026C-0002	MS2027C-0002	MS2028C-0002	MS2036C-0002	MS2037C-0002	MS2038C-0002	Time Domain (includes Distance Domain capabilities)
MS2026C-0007	MS2027C-0007	MS2028C-0007	MS2036C-0007	MS2037C-0007	MS2038C-0007	Secure Data Operation
MS2026C-0010	MS2027C-0010	MS2028C-0010	MS2036C-0010	MS2037C-0010	MS2038C-0010	Built-in Bias-Tee
	MS2027C-0011	MS2028C-0011		MS2037C-0011	MS2038C-0011	K(f) Test Port Connectors (MS20x7C & MS20x8C only)
MS2026C-0015	MS2027C-0015	MS2028C-0015	MS2036C-0015	MS2037C-0015	MS2038C-0015	Vector Voltmeter
MS2026C-0019	MS2027C-0019	MS2028C-0019	MS2036C-0019	MS2037C-0019	MS2038C-0019	High-Accuracy Power Meter (requires external USB sensor)
			MS2036C-0025	MS2037C-0025	MS2038C-0025	Interference Analysis, ^a 9 kHz to 9/15/20 GHz
			MS2036C-0027	MS2037C-0027	MS2038C-0027	Channel Scanner, ^a 9 kHz to 9/15/20 GHz
MS2026C-0031	MS2027C-0031	MS2028C-0031	MS2036C-0031	MS2037C-0031	MS2038C-0031	GPS Receiver (requires GPS antenna, 2000-1528-R, 2000-1652-R, or 2000-1760-R)
MS2026C-0077	MS2027C-0077	MS2028C-0077	MS2036C-0077	MS2037C-0077	MS2038C-0077	Balanced/Differential S-Parameters, 1-Port
			MS2036C-0431	MS2037C-0431	MS2038C-0431	Coverage Mapping ^b
MS2026C-0098	MS2027C-0098	MS2028C-0098	MS2036C-0098	MS2037C-0098	MS2038C-0098	Standard Calibration to ISO17025 and ANSI/NCSL Z540-1. Includes calibration certificate
MS2026C-0099	MS2027C-0099	MS2028C-0099	MS2036C-0099	MS2037C-0099	MS2038C-0099	Premium Calibration to ISO17025 and ANSI/NCSL Z540-1. Includes calibration certificate, test report, and uncertainty data
			MS2036C-0509	MS2037C-0509	MS2038C-0509	AM/FM/PM Analyzer ^c

a. Option 31 (GPS) is recommended.

b. Requires Option 31 (GPS) for full functionality.

c. Requires Option 431 (Coverage Mapping) for full functionality.

Related Literature, Application Notes, Manuals

Part Number	Description
10100-00065	Product Information, Compliance, and Safety
10580-00349	Spectrum Analyzer Measurement Guide
10580-00240	Power Meter Measurement Guide
10580-00289	VNA Measurement Guide
10580-00305	VNA Master User Guide
10580-00306	VNA Master Programming Manual
10580-00307	VNA Master Maintenance Manual
11410-00387	Primer on Vector Network Analysis
11410-00424	USB Power Sensor MA24106A
11410-00472	Measuring Interference
11410-00504	Microwave USB Power Sensor MA241x8A
11410-00531	Practical Tips on Making "Vector Voltmeter (VVM)" Phase Measurements using VNA Master (Option 15)
11410-00545	VNA Master + Spectrum Analyzer Brochure
11410-00549	VNA Master + Spectrum Analyzer Technical Data Sheet
11410-00565	Troubleshoot Wire Cable Assemblies with Frequency-Domain Reflectometry
11410-00700	Evaluation of RF Network Testing

VNA Master™ MS202xC/3xC Ordering Information

Standard Accessories (included with instrument)



Part Number	Description
2000-1685-R	Soft Carrying Case (supplied with MS202xC only)
2000-1686-R	Soft Carrying Case (supplied with MS203xC only)
633-75	Rechargeable Li-Ion Battery
40-187-R	AC-DC Adapter
806-141-R	Automotive Power Adapter, 12 VDC, 60 W
3-2000-1498	USB A/5-pin Mini-B Cable, 3.05 m (10 ft)
2000-1371-R	Ethernet Cable, 2.13 m (7 ft) Certificate of Calibration and Conformance

Optional Accessories

Miscellaneous Accessories



Part Number	Description
MA2700A	Handheld Interference Hunter (For full specifications, refer to the MA2700A Technical Data Sheet 11410-00692)
2000-1371-R	Ethernet Cable, 2.1 m (7 ft)
3-806-152	Cat 5e Crossover Patch Cable, 2.1 m (7 ft)
633-75	Rechargeable Li-Ion Battery, 7500 mAh
2000-1374	External Dual Charger for Li-Ion Batteries
2000-1689-R	EMI Near Field Probe Kit
66864	Rack Mount Kit

GPS Antennas (active)



Part Number	Description
2000-1652-R	Magnet Mount, SMA(m), 3 VDC to 5 VDC with 1 ft cable
2000-1528-R	Magnet Mount, SMA(m), 3 VDC to 5 VDC with 4.6 m (15 ft) extension cable
2000-1760-R	Mini GPS Antenna, SMA(m), 25 dB gain, 2.5 VDC to 3.7 VDC

Backpack and Transit Case



Part Number	Description
67135	Anritsu Backpack (for handheld instrument and PC)
760-243-R	Transit Case with Wheels and Handle 56 cm x 45.5 cm x 26.5 cm (22.07" x 17.92" x 10.42")
760-261-R	Large Transit Case with Wheels and Handle 63.1 cm x 50 cm x 30 cm (24.83" x 19.69" x 11.88"), space for MA2700A, antennas, filters, instrument inside soft case, and other interference hunting accessories/tools
760-271-R	Transit Case for Portable Directional Antennas and Port Extender 52.4 cm x 42.8 cm x 20.6 cm (20.62" x 16.87" x 8.12") (for 2000-1777-R, 2000-1778-R, 2000-1779-R, 2000-1798-R)

Power Sensors (For complete ordering information see the respective data sheets of each sensor)



Part Number	Description
MA24105A	Inline Peak Power Sensor, 350 MHz to 4 GHz, +3 dBm to +51.76 dBm
MA24106A	RF USB Power Sensor, 50 MHz to 6 GHz, +23 dBm
MA24108A	Microwave USB Power Sensor, 10 MHz to 8 GHz, +20 dBm
MA24118A	Microwave USB Power Sensor, 10 MHz to 18 GHz, +20 dBm
MA24126A	Microwave USB Power Sensor, 10 MHz to 26 GHz, +20 dBm
MA24208A	Microwave Universal USB Power Sensor, 10 MHz to 8 GHz, +20 dBm
MA24218A	Microwave Universal USB Power Sensor, 10 MHz to 18 GHz, +20 dBm
MA24330A	Microwave CW USB Power Sensor, 10 MHz to 33 GHz, +20 dBm
MA24340A	Microwave CW USB Power Sensor, 10 MHz to 40 GHz, +20 dBm
MA24350A	Microwave CW USB Power Sensor, 10 MHz to 50 GHz, +20 dBm
MA25100A	RF Power Indicator

VNA Master™ MS202xC/3xC Ordering Information

Optional Accessories (continued)

Full Temperature Coaxial Calibration Kits (-10 °C to +55 °C , K Type is compatible with 3.5 mm and SMA connectors see individual data sheets on www.anritsu.com)



Part Number	Description
OSLN50A-8	High Performance Type N(m), DC to 8 GHz, 50 Ω
OSLNF50A-8	High Performance Type N(f), DC to 8 GHz, 50 Ω
TOSLN50A-8	High Performance with Through Type N(m), DC to 8 GHz, 50 Ω
TOSLNF50A-8	High Performance with Through Type N(f), DC to 8 GHz, 50 Ω
OSLN50A-18	High Performance Type N(m), DC to 18 GHz, 50 Ω
OSLNF50A-18	High Performance Type N(f), DC to 18 GHz, 50 Ω
TOSLN50A-18	High Performance with Through Type N(m), DC to 18 GHz, 50 Ω
TOSLNF50A-18	High Performance with Through Type N(f), DC to 18 GHz, 50 Ω
TOSLK50A-20	High Performance with Through Type K(m), DC to 20 GHz, 50 Ω
TOSLKF50A-20	High Performance with Through Type K(f), DC to 20 GHz, 50 Ω
TOSLK50A-40	High Performance with Through Type K(m), DC to 40 GHz, 50 Ω
TOSLKF50A-40	High Performance with Through Type K(f), DC to 40 GHz, 50 Ω

Coaxial Calibration Components, N Type 50 Ω, K Type 50 Ω (K Type is compatible with 3.5 mm and SMA connectors)



Part Number	Description
22N50	Precision Open/Short, N(m), DC to 18 GHz, 50 Ω
22NF50	Precision Open/Short, N(f), DC to 18 GHz, 50 Ω
28N50-2	Precision Load, N(m), DC to 18 GHz, 50 Ω
28NF50-2	Precision Load, N(f), DC to 18 GHz, 50 Ω
22K50	Precision Open/Short, K(m), DC to 40 GHz, 50 Ω
22KF50	Precision Open/Short, K(f), DC to 40 GHz, 50 Ω
28K50	Precision Load, K(m), DC to 40 GHz, 50 Ω
28KF50	Precision Load, K(f), DC to 40 GHz, 50 Ω

Coaxial Calibration Components, Other 50 Ω, 75 Ω



Part Number	Description
2000-1618-R	Precision Open/Short/Load, 7/16 DIN(m), DC to 6.0 GHz 50 Ω
2000-1619-R	Precision Open/Short/Load, 7/16 DIN(f), DC to 6.0 GHz 50 Ω
2000-1614-R	Precision Open/Short/Load, 4.3-10(f), DC to 6 GHz, 50 Ω
2000-1615-R	Precision Open/Short/Load, 4.3-10(m), DC to 6 GHz, 50 Ω
12N50-75B	Matching Pad, DC to 3 GHz, 50 Ω to 75 Ω
22N75	Open/Short, N(m), DC to 3 GHz, 75 Ω
22NF75	Open/Short, N(f), DC to 3 GHz, 75 Ω
26N75A	Precision Termination, N(m), DC to 3 GHz, 75 Ω
26NF75A	Precision Termination, N(f), DC to 3 GHz, 75 Ω
SM/PL-1	Precision N(m) Load, 42 dB, 6 GHz
SM/PLNF-1	Precision N(f) Load, 42 dB, 6 GHz
1091-55-R	Open, TNC(f), DC to 18 GHz
1091-53-R	Open, TNC(m), DC to 18 GHz
1091-56-R	Short, TNC(f), DC to 18 GHz
1091-54-R	Short, TNC(m), DC to 18 GHz
1015-54-R	Termination, TNC(f), DC to 18 GHz
1015-55-R	Termination, TNC(m), DC to 18 GHz

Precision Adapters



Part Number	Description
34NN50A	Precision Adapter, N(m) to N(m), DC to 18 GHz, 50 Ω
34NFN50	Precision Adapter, N(f) to N(f), DC to 18 GHz, 50 Ω
34NK50	Precision Adapter, DC to 18 GHz, N(m) to K(m), 50 Ω
34NFK50	Precision Adapter, DC to 18 GHz, N(m) to K(f), 50 Ω
K220B	Precision Adapter, DC to 40 GHz, K(m) to K(m), 50 Ω
K222B	Precision Adapter, DC to 40 GHz, K(f) to K(f), 50 Ω
K224B	Precision Adapter, DC to 40 GHz, K(m) to K(f), 50 Ω

VNA Master™ MS202xC/3xC Ordering Information

Optional Accessories (continued)

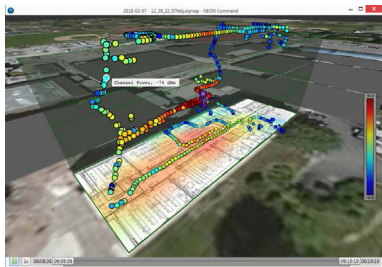
Waveguide Calibration Components and WG/Coaxial Adapters, Rectangular Type 50 Ω

Recommended waveguide calibration procedure requires two offset shorts and a precision load. The waveguide/coax adapter, shown attached to test port #1, adapts the VNA Master test ports to the waveguide under test.

Frequency Range (GHz)	1/8 Offset	3/8 Offset	Termination	Coax to Waveguide Adapter	Compatible Flanges
3.95 to 5.85	23UA187-R	24UA187-R	26UA187-R	35UA187N-R	CPR187F-R, CPR187G-R, UG-1352/U-R, UG-1353/U-R, UG-1728/U-R, UG-1729/U-R, UG-148/U-R, UG-149A/U-R
5.85 to 8.20	23UA137-R	24UA137-R	26UA137-R	35UA137N-R	CPR137F-R, CPR137G-R, UG-1356/U-R, UG-1357/U-R, UG-1732/U-R, UG-1733/U-R, UG-343B/U-R, UG-344/U-R, UG-440B/U-R, UG-441/U-R
7.05 to 10.00	23UA112-R	24UA112-R	26UA112-R	35UA112N-R	CPR112F-R, CPR112G-R, UG-1358/U-R, UG-1359/U-R, UG-1734/U-R, UG-1735/U-R, UG-52B/U-R, UG-51/U-R, UG-137B/U-R, UG-138/U-R
8.20 to 12.40	23UA90-R	24UA90-R	26UA90-R	35UA90N-R	CPR90F-R, CPR90G-R, UG-1360/U-R, UG-1361/U-R, UG-1736/U-R, UG-1737/U-R, UG-40B/U-R, UG-39/U-R, UG-135/U-R, UG-136B/U-R
12.40 to 18.00	23UA62-R	24UA62-R	26UA62-R	35UA62N-R	UG-541A/U-R, UG-419/U-R, UG-1665/U-R, UG1666/U-R
17.00 to 26.50	23UA42-R	24UA42-R	26UA42-R	35UA42K-R	UG-596A/U-R, UG-595/U-R, UG-597/U-R, UG-598A/U-R
26.50 to 40.00	23UA28-R	24UA28-R	26UA28-R	35UA28K-R	UG-599/U-R
3.30 to 4.90	23UM40-R	24UM40-R	26UM40-R	35UM40N-R	PDR40-R
3.95 to 5.85	23UM48-R	24UM48-R	26UM48-R	35UM48N-R	CAR48-R, PAR48-R, UAR48-R, PDR48-R
5.85 to 8.20	23UM70-R	24UM70-R	26UM70-R	35UM70N-R	CAR70-R, PAR70-R, UAR 70-R, PDR70-R
7.05 to 10.00	23UM84-R	24UM84-R	26UM84-R	35UM84N-R	CBR84-R, UBR84-R, PBR84-R, PDR84-R
8.20 to 12.40	23UM100-R	24UM100-R	26UM100-R	35UM100N-R	CBR100-R, UBR100-R, PBR100-R, PDR100-R
10.00 to 15.00	23UM120-R	24UM120-R	26UM120-R	35UM120N-R	CBR120-R, UBR120-R, PBR120-R, PDR120-R
12.40 to 18.00	23UM140-R	24UM140-R	26UM140-R	35UM140N-R	CBR140-R, UBR140-R, PBR140-R, PDR140-R
17.00 to 26.50	23UM220-R	24UM220-R	26UM220-R	35UM220K-R	CBR220-R, UBR220-R, PBR220-R, PDR220-R

* For Coaxial/Waveguide Adapter part numbers, N designates Type N and K designates K-Connector

MA8100A TRX NEON Signal Mapper (supported on MS2036C, MS2037C, MS2038C models only)



Model Number	Description
MA8100A-001	TRX NEON® Signal Mapper with Anritsu Integration and Tracking Unit. Includes 1 year TRX NEON Software License with 1 year of maintenance and support and 1 year of Cloud Service.
MA8100A-003	TRX NEON® Signal Mapper with Anritsu Integration and Tracking Unit. Includes 3 years TRX NEON Software License with 3 years of maintenance and support and 3 years of Cloud Service.
MA8100A-005	TRX NEON® Signal Mapper with Anritsu Integration and Tracking Unit. Includes 5 years TRX NEON Software License with 5 years of maintenance and support and 5 years of Cloud Service.
MA8100A-100	TRX NEON® Signal Mapper with Anritsu Integration and Tracking Unit. Includes Perpetual TRX NEON Software License with 3 years of maintenance and support and 3 years of Cloud Service.
2300-574	1 year TRX NEON Software License with 1 year of maintenance and support and 1 year of Cloud Service. Cannot be ordered separately from P/N MA8100A-001. See P/N 2300-612 for renewal.
2300-575	3 years TRX NEON Software License with 3 years of maintenance and support and 3 years of Cloud Service. Cannot be ordered separately from P/N MA8100A-003. See P/N 2300-613 for renewal.
2300-576	5 years TRX NEON Software License with 5 years of maintenance and support and 5 years of Cloud Service. Cannot be ordered separately from P/N MA8100A-005. See P/N 2300-614 for renewal.
2300-606	Perpetual TRX NEON Software License with 3 years of maintenance and support and 3 years of Cloud Service. Part number cab also be used to order a perpetual licsnse after a limited term license has expired.
2300-612	Renewal of 1 year TRX NEON Software License with 1 year of maintenance and support and 1 year of Cloud Service.
2300-613	Renewal of 3 year TRX NEON Software License with 3 year of maintenance and support and 3 year of Cloud Service.
2300-614	Renewal of 5 year TRX NEON Software License with 5 year of maintenance and support and 5 year of Cloud Service.

VNA Master™ MS202xC/3xC Ordering Information

Optional Accessories (continued)

Phase-Stable Test Port Extension Cables (Armored and Flexible)



Part Number	Description
14KFKF50-0.6	0.6 m (24 in), DC to 40 GHz, K(f) to K(f), 50 Ω
14KFKF50-1.0	1.0 m (39 in), DC to 40 GHz, K(f) to K(f), 50 Ω
14KFK50-0.6	0.6 m (24 in), DC to 40 GHz, K(f) to K(m), 50 Ω
14KFK50-1.0	1.0 m (39 in), DC to 40 GHz, K(f) to K(m), 50 Ω
15NN50-1.0B	1.0 m (39 in), DC to 18 GHz, N(m) to N(m), 50 Ω
15NNF50-1.0B	1.0 m (39 in), DC to 18 GHz, N(m) to N(f), 50 Ω
15LL50-1.0A	1.0 m (39 in), DC to 20 GHz, 3.5 mm(m) to 3.5 mm(m), 50 Ω
15LLF50-1.0A	1.0 m (39 in), DC to 20 GHz, 3.5 mm(m) to 3.5 mm(f), 50 Ω
15KK50-1.0A	1.0 m (39 in), DC to 26.5 GHz, K(m) to K(m), 50 Ω
15KKF50-1.0A	1.0 m (39 in), DC to 26.5 GHz, K(m) to K(f), 50 Ω

Phase-Stable Test Port Cables (Ruggedized and Armored)



Part Number	Description
15N43M50-1.5C	Test Port Extension Cable, Armored, 1.5 meters, DC to 6GHz, N(m) to 4.3-10(m)
15N43F50-1.5C	Test Port Extension Cable, Armored, 1.5 meter, DC to 6GHz, N(m) to 4.3-10(f)
15N43M50-3.0C	Test Port Extension Cable, Armored, 3 meters, DC to 6 GHz, N(m) to 4.3-10(m)
15N43F50-3.0C	Test Port Extension Cable, Armored, 3 meters, DC to 6 GHz, N(m) to 4.3-10(f)
15NF43M50-1.5C	Test Port Extension Cable, Armored, 1.5 meters, DC to 6 GHz, N(f) to 4.3-10(m)
15NF43F50-1.5C	Test Port Extension Cable, Armored, 1.5 meters, DC to 6 GHz, N(f) to 4.3-10(f)
15NF43M50-3.0C	Test Port Extension Cable, Armored, 3 meters, DC to 6 GHz, N(f) to 4.3-10(m)
15NF43F50-3.0C	Test Port Extension Cable, Armored, 3 meters, DC to 6 GHz, N(f) to 4.3-10(f)
15NNF50-1.5C	1.5 m, DC to 6 GHz, N(m) to N(f), 50 Ω
15NN50-1.5C	1.5 m, DC to 6 GHz, N(m) to N(m), 50 Ω
15NDF50-1.5C	1.5 m, DC to 6 GHz, N(m) to 7/16 DIN(f), 50 Ω
15ND50-1.5C	1.5 m, DC to 6 GHz, N(m) to 7/16 DIN(m), 50 Ω
15NNF50-3.0C	3.0 m, DC to 6 GHz, N(m) to N(f), 50 Ω
15NN50-3.0C	3.0 m, DC to 6 GHz, N(m) to N(m), 50 Ω
15NNF50-5.0C	5.0 m, DC to 6 GHz, N(m) to N(f), 50 Ω
15NN50-5.0C	5.0 m, DC to 6 GHz, N(m) to N(m), 50 Ω

Phase-Stable 18 GHz and 40 GHz Semi-Rigid Cables (Armored)



Part Number	Description
3670K50-1	0.3 m (12 in), DC to 40 GHz, K(f) to K(m), 50 Ω
3670K50-2	0.6 m (24 in), DC to 40 GHz, K(f) to K(m), 50 Ω
3670N50-1	0.3 m (12 in), DC to 18 GHz, N(f) to N(m), 50 Ω
3670NN50-1	0.3 m (12 in), DC to 18 GHz, N(m) to N(m), 50 Ω
3670N50-2	0.6 m (24 in), DC to 18 GHz, N(f) to N(m), 50 Ω
3670NN50-2	0.6 m (24 in), DC to 18 GHz, N(m) to N(m), 50 Ω

Adapters



Part Number	Description
1091-26-R	SMA(m) to N(m), DC to 18 GHz, 50 Ω
1091-27-R	SMA(f) to N(m), DC to 18 GHz, 50 Ω
1091-80-R	SMA(m) to N(f), DC to 18 GHz, 50 Ω
1091-81-R	SMA(f) to N(f), DC to 18 GHz, 50 Ω
1091-172-R	BNC(f) to N(m), DC to 1.3 GHz, 50 Ω
1091-465-R	Adapter, DC to 6 GHz, 4.3-10(f) to N(f), 50 Ω
1091-467-R	Adapter, DC to 6 GHz, 4.3-10(m) to N(f), 50 Ω
510-97-R	7/16 DIN(f) to 7/16 DIN (f), DC to 7.5 GHz, 50 Ω
513-62 -R	Adapter, DC to 18 GHz, TNC(f) to N(f), 50 Ω
1091-315-R	Adapter, DC to 18 GHz, TNC(m) to N(f), 50 Ω
1091-324-R	Adapter, DC to 18 GHz, TNC(f) to N(m), 50 Ω
1091-325 -R	Adapter, DC to 18 GHz, TNC(m) to N(m), 50 Ω
1091-317-R	Adapter, DC to 18 GHz, TNC(m) to SMA(f), 50 Ω
1091-318 -R	Adapter, DC to 18 GHz, TNC(m) to SMA(m), 50 Ω
1091-323-R	Adapter, DC to 18 GHz, TNC(m) to TNC(f), 50 Ω
1091-326-R	Adapter, DC to 18 GHz, TNC(m) to TNC(m), 50 Ω
510-102-R	N(m) to N(m), DC to 11 GHz, 50 Ω, 90 degrees right angle
34RKNF50D	Ruggedized K(m) to N(f), DC to 18 GHz, 50 Ω

VNA Master™ MS202xC/3xC Ordering Information

Optional Accessories (continued)

Attenuators N Type (up to 18 GHz)



Part Number	Description
3-1010-122	20 dB, 5 W, DC to 12.4 GHz, N(m) to N(f)
42N50-20	20 dB, 5 W, DC to 18 GHz, N(m) to N(f)
42N50A-30	30 dB, 5 W, DC to 18 GHz, N(m) to N(f)
3-1010-123	30 dB, 50 W, DC to 8.5 GHz, N(m) to N(f)
1010-127-R	30 dB, 150 W, DC to 3 GHz, N(m) to N(f)
3-1010-124	40 dB, 100 W, DC to 8.5 GHz, N(f) to N(m), Uni-directional
1010-121-R	40 dB, 100 W, DC to 18 GHz, N(f) to N(m), Uni-directional
1010-128-R	40 dB, 150 W, DC to 3 GHz, N(m) to N(f)

Attenuators K Type (up to 40 GHz)



Part Number	Description
41KB-3	Precision Fixed Attenuator, K(m) to K(f), 3 dB, DC to 26.5 GHz, 50 Ω
41KB-6	Precision Fixed Attenuator, K(m) to K(f), 6 dB, DC to 26.5 GHz, 50 Ω
41KB-10	Precision Fixed Attenuator, K(m) to K(f), 10 dB, DC to 26.5 GHz, 50 Ω
41KB-20	Precision Fixed Attenuator, K(m) to K(f), 20 dB, DC to 26.5 GHz, 50 Ω
41KC-3	Precision Fixed Attenuator, K(m) to K(f), 3 dB, DC to 40 GHz, 50 Ω
41KC-6	Precision Fixed Attenuator, K(m) to K(f), 6 dB, DC to 40 GHz, 50 Ω
41KC-10	Precision Fixed Attenuator, K(m) to K(f), 10 dB, DC to 40 GHz, 50 Ω
41KC-20	Precision Fixed Attenuator, K(m) to K(f), 20 dB, DC to 40 GHz, 50 Ω

Bandpass Filters

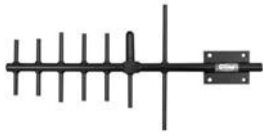


Part Number	Description
1030-114-R	806 MHz to 869 MHz, N(m) to SMA(f), 50 Ω
1030-109-R	824 MHz to 849 MHz, N(m) to SMA(f), 50 Ω
1030-110-R	880 MHz to 915 MHz, N(m) to SMA(f), 50 Ω
1030-111-R	1850 MHz to 1910 MHz, N(m) to SMA(f), 50 Ω
1030-112-R	2400 MHz to 2484 MHz, N(m) to SMA(f), 50 Ω
1030-105-R	890 MHz to 915 MHz, N(m) to N(f), 50 Ω
1030-106-R	1710 MHz to 1790 MHz, N(m) to N(f), 50 Ω
1030-107-R	1910 MHz to 1990 MHz, N(m) to N(f), 50 Ω
1030-149-R	High Pass, 150 MHz, N(m) to N(f), 50 Ω
1030-150-R	High Pass, 400 MHz, N(m) to N(f), 50 Ω
1030-151-R	High Pass, 700 MHz, N(m) to N(f), 50 Ω
1030-152-R	Low Pass, 200 MHz, N(m) to N(f), 50 Ω
1030-153-R	Low Pass, 550 MHz, N(m) to N(f), 50 Ω
1030-155-R	2500 MHz to 2700 MHz, N(m) to N(f), 50 Ω
1030-178-R	1920 MHz to 1980 MHz, N(m) to N(f), 50 Ω
1030-179-R	777 MHz to 798 MHz, N(m) to N(f), 50 Ω
1030-180-R	2500 MHz to 2570 MHz, N(m) to N(f), 50 Ω
2000-1684-R	791 MHz to 821 MHz, N(m) to N(f), 50 Ω
2000-1734-R	Bandpass Filter, 699 MHz to 715 MHz, N(m) and N(f), 50 Ω
2000-1735-R	Bandpass Filter, 776 MHz to 788 MHz, N(m) and N(f), 50 Ω
2000-1736-R	Bandpass Filter, 815 MHz to 850 MHz, N(m) and N(f), 50 Ω
2000-1737-R	Bandpass Filter, 1711 MHz to 1756 MHz, N(m) and N(f), 50 Ω
2000-1738-R	Bandpass Filter, 1850 MHz to 1910 MHz, N(m) and N(f), 50 Ω
2000-1739-R	Bandpass Filter, 880 MHz to 915 MHz, N(m) and N(f), 50 Ω
2000-1740-R	Bandpass Filter, 1710 MHz to 1785 MHz, N(m) and N(f), 50 Ω
2000-1741-R	Bandpass Filter, 1920 MHz to 1980 MHz, N(m) and N(f), 50 Ω
2000-1742-R	Bandpass Filter, 832 MHz to 862 MHz, N(m) and N(f), 50 Ω
2000-1743-R	Bandpass Filter, 2500 MHz to 2570 MHz, N(m) and N(f), 50 Ω
2000-1799-R	Bandpass Filter, 2305 MHz to 2320 MHz, N(m) and N(f), 50 Ω
2000-1911-R	Bandpass Filter, 703 MHz to 748 MHz, N(m) and N(f), 50 Ω
200-1912-R	Bandpass Filter, 788 MHz to 798 MHz, N(m) and N(f), 50 Ω
200-1925-R	Bandpass Filter, 663 MHz to 698 MHz, N(m) and N(f), 50 Ω
200-1926-R	Bandpass Filter, 776 MHz to 806 MHz, N(m) and N(f), 50 Ω

VNA Master™ MS202xC/3xC Ordering Information

Optional Accessories (continued)

Directional Antennas



Part Number	Description
2000-1777-R	Portable Directional Antenna, 9 kHz to 20 MHz, N(f)
2000-1778-R	Portable Directional Antenna, 20 MHz to 200 MHz, N(f)
2000-1779-R	Portable Directional Antenna, 200 MHz to 500 MHz, N(f)
2000-1659-R	698 MHz to 787 MHz, N(f), 10.1 dBi, Yagi
2000-1411-R	824 MHz to 896 MHz, N(f), 12.3 dBi, Yagi
2000-1412-R	885 MHz to 975 MHz, N(f), 12.6 dBi, Yagi
2000-1660-R	1425 MHz to 1535 MHz, N(f), 14.3 dBi, Yagi
2000-1413-R	1710 MHz to 1880 MHz, N(f), 12.3 dBi, Yagi
2000-1414-R	1850 MHz to 1990 MHz, N(f), 11.4 dBi, Yagi
2000-1416-R	1920 MHz to 2170 MHz, N(f), 14.3 dBi, Yagi
2000-1415-R	2400 MHz to 2500 MHz, N(f), 14.1 dBi, Yagi
2000-1726-R	Antenna, 2500 MHz to 2700 MHz, N(f), 14.1 dBi, Yagi
2000-1715-R	Directional Antenna, 698 MHz to 2500 MHz, N(f), gain of 2 dBi to 10 dBi, typical
2000-1677-R	300 MHz to 3000 MHz, SMA(m), 50 ohm, 3 m cable (9.8 ft) 0 to 6 dBi gain @ 950 MHz, Log Periodic
2000-1747-R	Antenna, Log Periodic, 300 MHz to 7000 MHz, N(f), 5.1 dBi, typical
2000-1748-R	Antenna, Log Periodic, 1 GHz to 18 GHz, N(f), 6 dBi, typical
2000-1812-R	Portable Yagi Antenna, 450 MHz to 512 MHz, N(f), 7.1 dBi
2000-1825-R	Portable Yagi Antenna, 380 MHz to 430 MHz, N(f), 7.1 dBi

Portable Antennas



Part Number	Description
2000-1200-R	806 MHz to 866 MHz, SMA(m), 50 Ω
2000-1473-R	870 MHz to 960 MHz, SMA(m), 50 Ω
2000-1035-R	896 MHz to 941 MHz, SMA(m), 50 Ω (1/2 wave)
2000-1030-R	1710 MHz to 1880 MHz, SMA(m), 50 Ω (1/2 wave)
2000-1474-R	1710 MHz to 1880 MHz with knuckle elbow (1/2 wave)
2000-1031-R	1850 MHz to 1990 MHz, SMA(m), 50 Ω (1/2 wave)
2000-1475-R	1920 MHz to 1980 MHz and 2110 MHz to 2170 MHz, SMA(m), 50 Ω
2000-1032-R	2400 MHz to 2500 MHz, SMA(m), 50 Ω (1/2 wave)
2000-1361-R	2400 MHz to 2500 MHz, 5000 MHz to 6000 MHz, SMA(m), 50 Ω
2000-1751-R	698 MHz to 960 MHz, 1710 MHz to 2100 MHz, 2500 MHz to 2700 MHz, SMA(m), 2 dB typical, 50 Ω
2000-1487-R	VHF/UHF, Telescopic Whip antenna, straight or 90°, BNC(m), 50 Ω
2000-1636-R	Antenna Kit (Consists of: 2000-1030-R, 2000-1031-R, 2000-1032-R, 2000-1200-R, 2000-1035-R, 2000-1361-R, and carrying pouch)

Mag Mount Broadband Antennas



Part Number	Description
2000-1616-R	20 MHz to 21000 MHz, N(f), 50 Ω
2000-1647-R	Cable 1: 698 MHz to 1200 MHz, 2 dBi peak gain, 1700 MHz to 2700 MHz, 5 dBi peak gain, N(m), 50 Ω, 10 ft Cable 2: 3000 MHz to 6000 MHz, 5 dBi peak gain, N(m), 50 Ω, 10 ft Cable 3: GPS 26 dB gain, SMA(m), 50 Ω, 10 ft
2000-1645-R	694 MHz to 894 MHz, 3 dBi peak gain 1700 MHz to 2700 MHz, 3 dBi peak gain, N(m), 50 Ω, 10 ft
2000-1646-R	750 MHz to 1250 MHz, 3 dBi peak gain, 1650 MHz to 2700 MHz, 5 dB peak gain, N(m), 50 Ω, 10 ft
2000-1648-R	1700 MHz to 6000 MHz, 3 dBi peak gain, N(m), 50 Ω, 10 ft

Notes

• United States

Anritsu Company

1155 East Collins Boulevard, Suite 100,
Richardson, TX, 75081 U.S.A.
Toll Free: 1-800-267-4878
Phone: +1-972-644-1777
Fax: +1-972-671-1877

• Canada

Anritsu Electronics Ltd.

700 Silver Seven Road, Suite 120,
Kanata, Ontario K2V 1C3, Canada
Phone: +1-613-591-2003
Fax: +1-613-591-1006

• Brazil

Anritsu Eletrônica Ltda.

Praça Amadeu Amaral, 27 - 1 Andar
01327-010 - Bela Vista - Sao Paulo - SP - Brazil
Phone: +55-11-3283-2511
Fax: +55-11-3288-6940

• Mexico

Anritsu Company, S.A. de C.V.

Av. Ejército Nacional No. 579 Piso 9, Col. Granada
11520 México, D.F., México
Phone: +52-55-1101-2370
Fax: +52-55-5254-3147

• United Kingdom

Anritsu EMEA Ltd.

200 Capability Green, Luton, Bedfordshire LU1 3LU, U.K.
Phone: +44-1582-433280
Fax: +44-1582-731303

• France

Anritsu S.A.

12 avenue du Québec, Batiment Iris 1-Silic 612,
91140 Villebon-sur-Yvette, France
Phone: +33-1-60-92-15-50
Fax: +33-1-64-46-10-65

• Germany

Anritsu GmbH

Nemetschek Haus, Konrad-Zuse-Platz 1
81829 München, Germany
Phone: +49-89-442308-0
Fax: +49-89-442308-55

• Italy

Anritsu S.r.l.

Via Elio Vittorini 129, 00144 Roma Italy
Phone: +39-06-509-9711
Fax: +39-06-502-2425

• Sweden

Anritsu AB

Isafjordsgatan 32C, 164 40 KISTA, Sweden
Phone: +46-8-534-707-00

• Finland

Anritsu AB

Teknobulevardi 3-5, FI-01530 VANTAA, Finland
Phone: +358-20-741-8100
Fax: +358-20-741-8111

• Denmark

Anritsu A/S

Kay Fiskers Plads 9, 2300 Copenhagen S, Denmark
Phone: +45-7211-2200
Fax: +45-7211-2210

• Russia

Anritsu EMEA Ltd.

Representation Office in Russia

Tverskaya str. 16/2, bld. 1, 7th floor.
Moscow, 125009, Russia
Phone: +7-495-363-1694
Fax: +7-495-935-8962

• Spain

Anritsu EMEA Ltd.

Representation Office in Spain

Edificio Cuzco IV, Po. de la Castellana, 141, Pta. 5
28046, Madrid, Spain
Phone: +34-915-726-761
Fax: +34-915-726-621

• United Arab Emirates

Anritsu EMEA Ltd.

Dubai Liaison Office

902 Aurora Tower
P.O. Box 500311-Dubai Internet City
Dubai, United Arab Emirates
Phone: +971-4-3758479
Fax: +971-4-4249036

• India

Anritsu India Private Limited

2nd & 3rd Floor, #837/1, Binnamangla 1st Stage,
Indiranagar, 100ft Road, Bangalore - 560038, India
Phone: +91-80-6728-1300
Fax: +91-80-6728-1301

• Singapore

Anritsu Private Limited

11 Chang Charn Road, #04-01, Shriro House
Singapore 159640
Phone: +65-6282-2400
Fax: +65-6282-2533

• P. R. China (Shanghai)

Anritsu (China) Co., Ltd.

Room 2701-2705, Tower A,
New Caohejing International Business Center
No. 391 Gui Ping Road Shanghai, Xu Hui Di District,
Shanghai 200233, P.R. China
Phone: +86-21-6237-0898
Fax: +86-21-6237-0899

• P. R. China (Hong Kong)

Anritsu Company Ltd.

Unit 1006-7, 10/F., Greenfield Tower, Concordia Plaza,
No. 1 Science Museum Road, Tsim Sha Tsui East,
Kowloon, Hong Kong, P. R. China
Phone: +852-2301-4980
Fax: +852-2301-3545

• Japan

Anritsu Corporation

8-5, Tamura-cho, Atsugi-shi,
Kanagawa, 243-0016 Japan
Phone: +81-46-296-6509
Fax: +81-46-225-8352

• Korea

Anritsu Corporation, Ltd.

5FL, 235 Pangyojeok-ro, Bundang-gu, Seongnam-si,
Gyeonggi-do, 13494 Korea
Phone: +82-31-696-7750
Fax: +82-31-696-7751

• Australia

Anritsu Pty Ltd.

Unit 20, 21-35 Ricketts Road,
Mount Waverley, Victoria 3149, Australia
Phone: +61-3-9558-8177
Fax: +61-3-9558-8255

• Taiwan

Anritsu Company Inc.

7F, No. 316, Sec. 1, Neihu Rd., Taipei 114, Taiwan
Phone: +886-2-8751-1816
Fax: +886-2-8751-1817



Anritsu utilizes recycled paper and environmentally conscious inks and toner.



® Anritsu All trademarks are registered trademarks of their respective owners. Data subject to change without notice. For the most recent specifications visit: www.anritsu.com