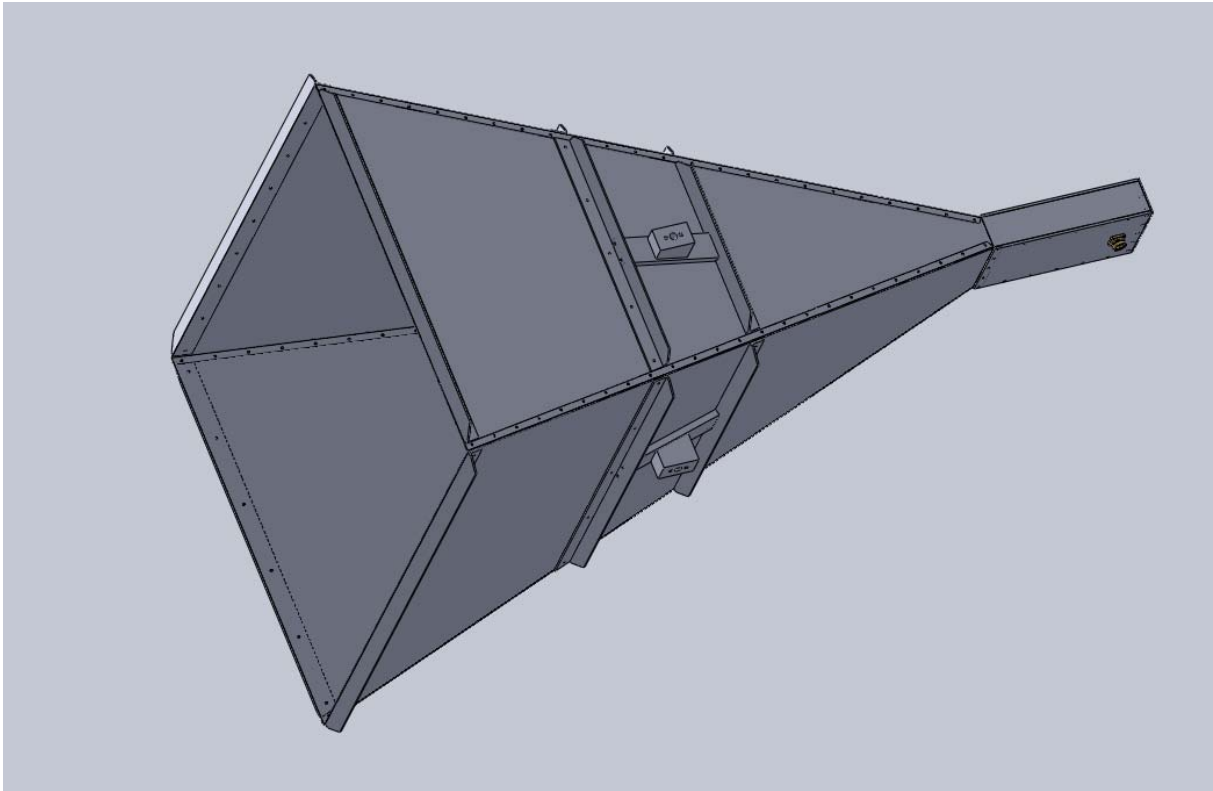


SCHWARZBECK MESS - ELEKTRONIK

An der Klinge 29 D-69250 Schönau Tel.: 06228/1001 Fax.: (49)6228/1003

Standard Hornantenne HA 9250-12 Standard Horn Antenna HA 9250-12



Beschreibung:

Linear polarisierte Standard
Pyramidenhornantenne mit 7/16
Koaxialanschluß für höchste
Belastbarkeit.

Technische Daten:

Frequenzbereich (nominell):	1-2 GHz
Frequenzbereich (nutzbar):	0.92 - 2.2 GHz
Gewinn:	≈ 20 dBi
Antennen-Wandlungsmaß:	11...17 dB/m
Stehwellenverhältnis:	typ. < 1.5
Vor- Rückmaß:	typ. > 27 dB
3 dB Halbwertsbreite E-Ebene:	16°
3 dB Halbwertsbreite H-Ebene:	15°
6 dB Öffnungswinkel E-Ebene:	22°
6 dB Öffnungswinkel H-Ebene:	24°
Anschlußbuchse:	7/16
Max. Eingangsleistung:	1.8 kW (1 GHz) 1.2 kW (2 GHz)

Befestigungsgewinde:

3/8", 5/8"

Abmessungen:

1.3 x 0.98 x 1.9 m

Gewicht:

27 kg

Material:

Aluminium

Description:

Linear polarized standard gain horn
antenna with coaxial 7/16 connector
for highest power handling.

Specifications:

Frequenzbereich (nominell):	1-2 GHz
Frequenzbereich (useable):	0.92 - 2.2 GHz
Gain:	≈ 20 dBi
Antenna Factor:	11...17 dB/m
VSWR:	typ. < 1.5
Front to Back Ratio:	typ. > 27 dB
Half Power Beamwidth (E-Plane):	16°
Half Power Beamwidth (H-Plane):	15°
6 dB Beamwidth (E-Plane):	22°
6 dB Beamwidth (H-Plane):	24°
Connector:	7/16
Max. Input Power:	1.8 kW (1 GHz) 1.2 kW (2 GHz)

Mounting Threads:

Dimensions:

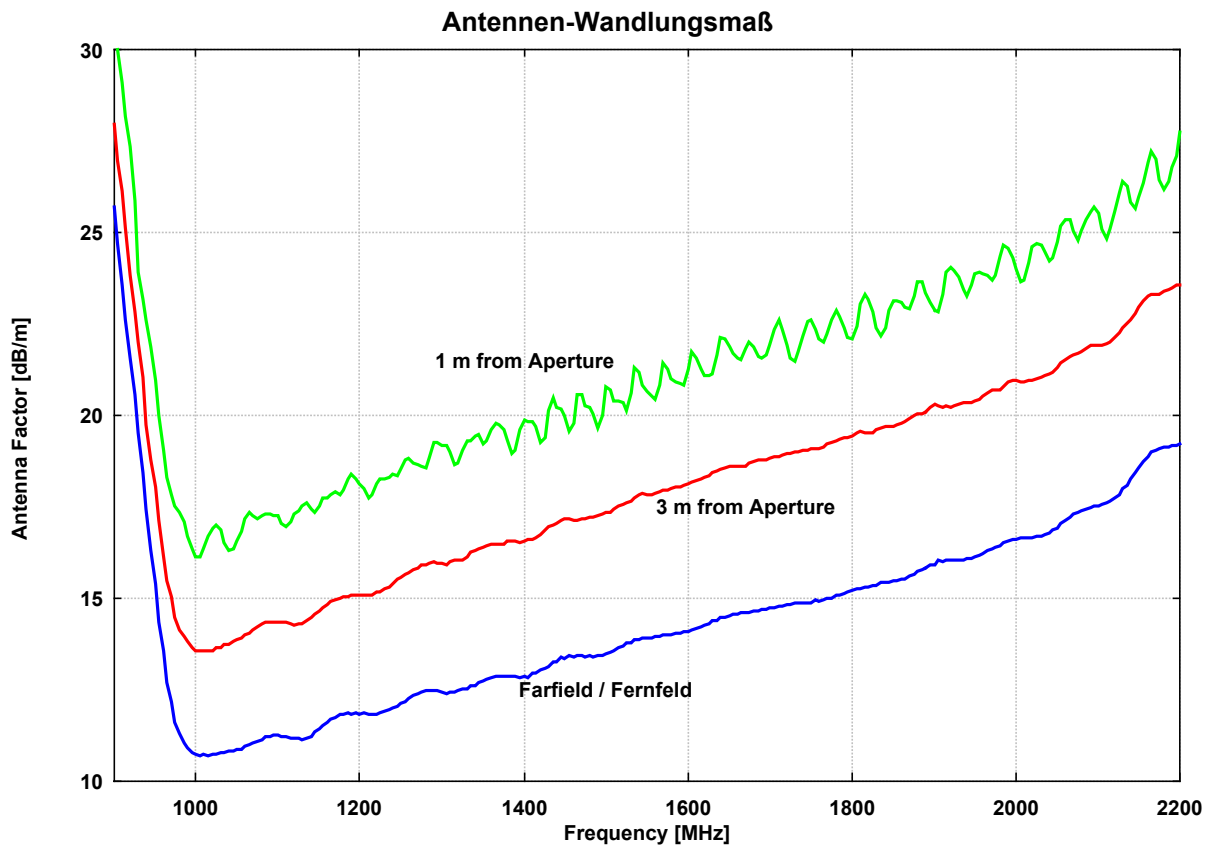
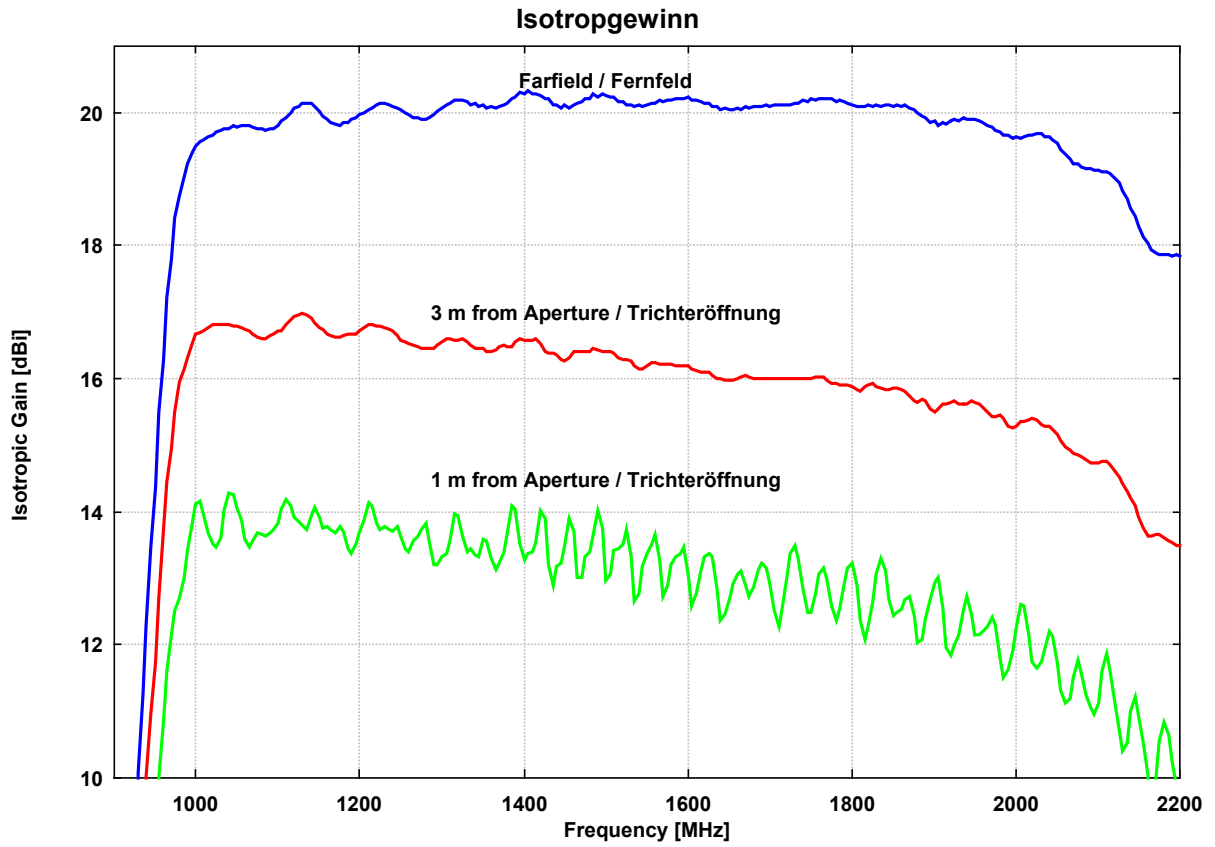
Weight:

Material:

SCHWARZBECK MESS - ELEKTRONIK

An der Klinge 29 D-69250 Schönau Tel.: 06228/1001 Fax.: (49)6228/1003

Standard Hornantenne HA 9250-12 Standard Horn Antenna HA 9250-12



SCHWARZBECK MESS - ELEKTRONIK

An der Klinge 29 D-69250 Schönau Tel.: 06228/1001 Fax.: (49)6228/1003

Standard Hornantenne HA 9250-12 Standard Horn Antenna HA 9250-12

Frequency	Gain(Isotr.) Farfield	Ant.-Factor Farfield	Gain(Isotr.) 3 m Aperture	Ant.-Factor 3 m Aperture	Gain(Isotr.) 1 m Aperture	Ant.-Factor 1 m Aperture
MHz	dBi	dB/m	dBi	dB/m	dBi	dB/m
900.00	3.61	25.69	1.36	27.95	-1.70	31.01
905.00	4.65	24.70	2.40	26.95	-0.69	30.04
910.00	5.83	23.57	3.28	26.12	0.32	29.08
915.00	6.86	22.59	4.30	25.15	1.26	28.19
920.00	7.94	21.55	5.65	23.85	2.15	27.35
925.00	8.99	20.55	6.73	22.81	3.65	25.89
930.00	10.07	19.52	7.58	22.01	5.70	23.89
935.00	11.23	18.41	8.60	21.03	6.45	23.18
940.00	12.27	17.41	9.93	19.75	7.08	22.60
945.00	13.45	16.28	10.95	18.78	7.87	21.86
950.00	14.38	15.39	11.74	18.04	8.85	20.93
955.00	15.50	14.32	12.69	17.13	9.85	19.97
960.00	16.29	13.57	13.76	16.11	10.85	19.02
965.00	17.23	12.68	14.44	15.47	11.59	18.32
970.00	17.80	12.16	14.95	15.01	12.14	17.82
975.00	18.41	11.59	15.51	14.49	12.51	17.49
980.00	18.75	11.30	15.95	14.10	12.69	17.35
985.00	19.05	11.04	16.14	13.94	13.01	17.08
990.00	19.24	10.89	16.32	13.81	13.42	16.71
995.00	19.39	10.79	16.53	13.64	13.82	16.35
1000.00	19.49	10.73	16.66	13.56	14.10	16.12
1005.00	19.57	10.70	16.69	13.57	14.15	16.11
1010.00	19.60	10.71	16.73	13.58	13.96	16.35
1015.00	19.65	10.70	16.78	13.57	13.68	16.67
1020.00	19.66	10.73	16.81	13.58	13.50	16.89
1025.00	19.70	10.73	16.82	13.62	13.45	16.98
1030.00	19.73	10.75	16.82	13.65	13.61	16.87
1035.00	19.76	10.76	16.81	13.71	14.01	16.50
1040.00	19.77	10.80	16.82	13.75	14.28	16.28
1045.00	19.80	10.80	16.79	13.81	14.25	16.35
1050.00	19.79	10.85	16.79	13.86	14.07	16.57
1055.00	19.82	10.86	16.78	13.91	13.86	16.83
1060.00	19.81	10.92	16.75	13.97	13.58	17.15
1065.00	19.80	10.97	16.71	14.06	13.45	17.32
1070.00	19.79	11.01	16.67	14.14	13.55	17.25
1075.00	19.76	11.09	16.63	14.22	13.68	17.17
1080.00	19.77	11.12	16.60	14.29	13.66	17.23
1085.00	19.73	11.20	16.60	14.33	13.64	17.29
1090.00	19.75	11.22	16.64	14.33	13.69	17.28
1095.00	19.76	11.25	16.67	14.34	13.73	17.27
1100.00	19.82	11.23	16.71	14.34	13.81	17.24
1105.00	19.87	11.21	16.73	14.35	14.04	17.05
1110.00	19.93	11.19	16.81	14.32	14.19	16.94
1115.00	20.00	11.17	16.89	14.28	14.08	17.09
1120.00	20.06	11.15	16.94	14.26	13.91	17.29
1125.00	20.10	11.14	16.96	14.29	13.84	17.40
1130.00	20.15	11.13	16.97	14.31	13.79	17.50
1135.00	20.15	11.17	16.96	14.36	13.73	17.59
1140.00	20.15	11.21	16.90	14.46	13.93	17.43
1145.00	20.09	11.31	16.84	14.56	14.07	17.33
1150.00	20.02	11.41	16.78	14.65	13.92	17.52
1155.00	19.96	11.51	16.74	14.73	13.76	17.71
1160.00	19.90	11.61	16.68	14.83	13.78	17.73

SCHWARZBECK MESS - ELEKTRONIK

An der Klinge 29 D-69250 Schönau Tel.: 06228/1001 Fax.: (49)6228/1003

Standard Hornantenne HA 9250-12 Standard Horn Antenna HA 9250-12

Frequency	Gain(Isotr.) Farfield	Ant.-Factor Farfield	Gain(Isotr.) 3 m Aperture	Ant.-Factor 3 m Aperture	Gain(Isotr.) 1 m Aperture	Ant.-Factor 1 m Aperture
MHz	dBi	dB/m	dBi	dB/m	dBi	dB/m
1165.00	19.86	11.69	16.65	14.90	13.73	17.81
1170.00	19.84	11.75	16.63	14.96	13.68	17.91
1175.00	19.82	11.80	16.63	14.99	13.78	17.84
1180.00	19.85	11.81	16.64	15.02	13.71	17.94
1185.00	19.86	11.84	16.66	15.04	13.43	18.26
1190.00	19.90	11.83	16.66	15.07	13.37	18.36
1195.00	19.92	11.85	16.68	15.09	13.52	18.24
1200.00	19.98	11.83	16.71	15.09	13.67	18.13
1205.00	20.00	11.84	16.77	15.07	13.87	17.97
1210.00	20.05	11.83	16.81	15.07	14.14	17.73
1215.00	20.08	11.83	16.81	15.10	14.09	17.82
1220.00	20.11	11.83	16.80	15.15	13.83	18.12
1225.00	20.14	11.84	16.79	15.19	13.72	18.26
1230.00	20.14	11.88	16.78	15.24	13.77	18.24
1235.00	20.13	11.93	16.75	15.30	13.73	18.32
1240.00	20.09	12.00	16.71	15.37	13.70	18.39
1245.00	20.07	12.05	16.64	15.49	13.77	18.35
1250.00	20.04	12.11	16.58	15.58	13.64	18.52
1255.00	20.01	12.18	16.55	15.65	13.43	18.77
1260.00	19.98	12.25	16.53	15.69	13.40	18.83
1265.00	19.93	12.33	16.51	15.76	13.56	18.71
1270.00	19.92	12.38	16.47	15.82	13.64	18.66
1275.00	19.90	12.43	16.45	15.88	13.72	18.61
1280.00	19.91	12.45	16.45	15.92	13.83	18.54
1285.00	19.93	12.46	16.45	15.95	13.57	18.83
1290.00	19.97	12.47	16.45	15.98	13.19	19.24
1295.00	20.02	12.44	16.50	15.96	13.20	19.26
1300.00	20.07	12.43	16.56	15.94	13.31	19.19
1305.00	20.13	12.40	16.61	15.92	13.38	19.15
1310.00	20.15	12.41	16.60	15.97	13.56	19.00
1315.00	20.19	12.41	16.58	16.02	13.96	18.64
1320.00	20.18	12.45	16.58	16.05	13.95	18.68
1325.00	20.18	12.49	16.61	16.06	13.62	19.05
1330.00	20.17	12.53	16.56	16.14	13.40	19.30
1335.00	20.13	12.60	16.49	16.24	13.43	19.30
1340.00	20.15	12.61	16.45	16.31	13.35	19.41
1345.00	20.09	12.70	16.46	16.33	13.32	19.47
1350.00	20.11	12.72	16.46	16.36	13.59	19.23
1355.00	20.07	12.79	16.42	16.44	13.57	19.29
1360.00	20.09	12.80	16.41	16.48	13.29	19.60
1365.00	20.08	12.84	16.43	16.49	13.13	19.79
1370.00	20.10	12.86	16.48	16.47	13.23	19.73
1375.00	20.12	12.87	16.50	16.49	13.39	19.60
1380.00	20.15	12.87	16.48	16.54	13.66	19.36
1385.00	20.21	12.84	16.48	16.57	14.09	18.96
1390.00	20.23	12.85	16.54	16.54	14.04	19.04
1395.00	20.31	12.80	16.60	16.51	13.51	19.61
1400.00	20.28	12.86	16.58	16.56	13.27	19.87
1405.00	20.34	12.83	16.57	16.61	13.36	19.81
1410.00	20.29	12.92	16.58	16.62	13.40	19.81
1415.00	20.29	12.95	16.59	16.64	13.54	19.69
1420.00	20.26	13.01	16.52	16.74	14.01	19.25
1425.00	20.20	13.09	16.42	16.87	13.90	19.40

SCHWARZBECK MESS - ELEKTRONIK

An der Klinge 29 D-69250 Schönau Tel.: 06228/1001 Fax.: (49)6228/1003

Standard Hornantenne HA 9250-12 Standard Horn Antenna HA 9250-12

Frequency	Gain(Isotr.) Farfield	Ant.-Factor Farfield	Gain(Isotr.) 3 m Aperture	Ant.-Factor 3 m Aperture	Gain(Isotr.) 1 m Aperture	Ant.-Factor 1 m Aperture
MHz	dBi	dB/m	dBi	dB/m	dBi	dB/m
1430.00	20.20	13.13	16.38	16.94	13.21	20.11
1435.00	20.11	13.25	16.38	16.98	12.90	20.46
1440.00	20.12	13.26	16.36	17.02	13.17	20.22
1445.00	20.06	13.36	16.30	17.12	13.23	20.19
1450.00	20.11	13.34	16.27	17.17	13.46	19.99
1455.00	20.08	13.40	16.32	17.15	13.90	19.58
1460.00	20.12	13.38	16.40	17.11	13.71	19.79
1465.00	20.14	13.40	16.42	17.12	13.00	20.54
1470.00	20.16	13.40	16.41	17.16	13.00	20.57
1475.00	20.22	13.38	16.40	17.19	13.33	20.27
1480.00	20.21	13.41	16.42	17.20	13.39	20.23
1485.00	20.28	13.38	16.45	17.21	13.63	20.02
1490.00	20.24	13.44	16.43	17.25	14.02	19.67
1495.00	20.28	13.43	16.42	17.30	13.74	19.98
1500.00	20.26	13.48	16.42	17.33	12.96	20.78
1505.00	20.24	13.53	16.42	17.35	13.07	20.70
1510.00	20.23	13.57	16.38	17.42	13.41	20.39
1515.00	20.17	13.66	16.32	17.51	13.44	20.39
1520.00	20.17	13.68	16.29	17.56	13.51	20.35
1525.00	20.12	13.77	16.30	17.59	13.73	20.15
1530.00	20.13	13.78	16.27	17.64	13.32	20.60
1535.00	20.10	13.85	16.20	17.74	12.65	21.29
1540.00	20.11	13.86	16.15	17.82	12.78	21.19
1545.00	20.10	13.90	16.15	17.85	13.17	20.83
1550.00	20.12	13.91	16.19	17.83	13.37	20.66
1555.00	20.14	13.91	16.24	17.81	13.52	20.53
1560.00	20.15	13.93	16.23	17.85	13.65	20.43
1565.00	20.19	13.93	16.21	17.90	13.28	20.83
1570.00	20.16	13.98	16.21	17.93	12.72	21.42
1575.00	20.19	13.97	16.22	17.95	12.88	21.28
1580.00	20.19	14.00	16.21	17.99	13.19	21.00
1585.00	20.20	14.02	16.19	18.03	13.32	20.90
1590.00	20.22	14.02	16.19	18.06	13.38	20.87
1595.00	20.21	14.07	16.20	18.08	13.45	20.83
1600.00	20.23	14.07	16.18	18.12	13.02	21.28
1605.00	20.19	14.14	16.15	18.18	12.59	21.74
1610.00	20.19	14.16	16.13	18.23	12.77	21.59
1615.00	20.16	14.22	16.11	18.27	13.13	21.25
1620.00	20.15	14.26	16.11	18.30	13.31	21.10
1625.00	20.14	14.30	16.09	18.35	13.37	21.07
1630.00	20.10	14.37	16.05	18.42	13.32	21.14
1635.00	20.10	14.39	16.01	18.48	12.85	21.64
1640.00	20.05	14.47	15.99	18.52	12.37	22.15
1645.00	20.07	14.48	15.98	18.56	12.45	22.09
1650.00	20.04	14.53	15.98	18.59	12.70	21.87
1655.00	20.04	14.56	15.98	18.62	12.91	21.69
1660.00	20.06	14.56	16.00	18.63	13.07	21.55
1665.00	20.05	14.60	16.03	18.62	13.11	21.54
1670.00	20.09	14.59	16.05	18.63	12.88	21.80
1675.00	20.08	14.62	16.03	18.67	12.72	21.98
1680.00	20.09	14.64	16.00	18.73	12.86	21.86
1685.00	20.10	14.65	15.99	18.76	13.13	21.62
1690.00	20.09	14.69	16.01	18.77	13.22	21.56

SCHWARZBECK MESS - ELEKTRONIK

An der Klinge 29 D-69250 Schönau Tel.: 06228/1001 Fax.: (49)6228/1003

Standard Hornantenne HA 9250-12 Standard Horn Antenna HA 9250-12

Frequency	Gain(Isotr.) Farfield	Ant.-Factor Farfield	Gain(Isotr.) 3 m Aperture	Ant.-Factor 3 m Aperture	Gain(Isotr.) 1 m Aperture	Ant.-Factor 1 m Aperture
MHz	dBi	dB/m	dBi	dB/m	dBi	dB/m
1695.00	20.12	14.68	16.01	18.79	13.16	21.65
1700.00	20.10	14.72	16.00	18.83	12.93	21.90
1705.00	20.12	14.73	16.00	18.86	12.51	22.34
1710.00	20.11	14.77	16.00	18.88	12.28	22.60
1715.00	20.12	14.79	16.00	18.90	12.55	22.35
1720.00	20.12	14.81	16.00	18.93	13.03	21.90
1725.00	20.13	14.82	16.00	18.96	13.38	21.57
1730.00	20.14	14.84	16.00	18.98	13.49	21.49
1735.00	20.15	14.85	16.00	19.00	13.29	21.72
1740.00	20.19	14.85	15.99	19.04	12.85	22.18
1745.00	20.17	14.88	16.00	19.05	12.48	22.58
1750.00	20.22	14.86	16.01	19.07	12.48	22.60
1755.00	20.18	14.93	16.03	19.08	12.78	22.33
1760.00	20.21	14.92	16.03	19.10	13.05	22.08
1765.00	20.20	14.95	16.02	19.14	13.14	22.01
1770.00	20.20	14.98	15.97	19.21	12.97	22.21
1775.00	20.22	14.99	15.93	19.27	12.57	22.63
1780.00	20.17	15.06	15.92	19.31	12.36	22.86
1785.00	20.19	15.06	15.91	19.35	12.54	22.71
1790.00	20.16	15.12	15.90	19.37	12.91	22.37
1795.00	20.15	15.15	15.90	19.40	13.16	22.14
1800.00	20.12	15.20	15.88	19.45	13.23	22.09
1805.00	20.10	15.25	15.84	19.51	12.90	22.45
1810.00	20.10	15.27	15.82	19.55	12.35	23.02
1815.00	20.09	15.30	15.87	19.53	12.08	23.32
1820.00	20.13	15.29	15.91	19.51	12.26	23.16
1825.00	20.10	15.34	15.92	19.53	12.64	22.81
1830.00	20.13	15.34	15.88	19.59	13.06	22.41
1835.00	20.09	15.40	15.85	19.65	13.30	22.19
1840.00	20.11	15.41	15.84	19.68	13.11	22.41
1845.00	20.11	15.43	15.84	19.70	12.68	22.86
1850.00	20.10	15.46	15.85	19.71	12.43	23.13
1855.00	20.13	15.46	15.85	19.73	12.47	23.12
1860.00	20.09	15.52	15.84	19.77	12.54	23.07
1865.00	20.11	15.53	15.80	19.83	12.67	22.96
1870.00	20.06	15.60	15.74	19.92	12.73	22.92
1875.00	20.04	15.64	15.67	20.01	12.44	23.24
1880.00	19.99	15.71	15.65	20.05	12.03	23.67
1885.00	19.94	15.78	15.68	20.05	12.07	23.66
1890.00	19.93	15.82	15.66	20.09	12.39	23.36
1895.00	19.85	15.92	15.55	20.22	12.67	23.10
1900.00	19.87	15.92	15.49	20.30	12.93	22.87
1905.00	19.80	16.02	15.55	20.27	13.00	22.82
1910.00	19.85	15.99	15.61	20.23	12.55	23.29
1915.00	19.83	16.03	15.62	20.24	11.95	23.91
1920.00	19.87	16.02	15.65	20.23	11.83	24.06
1925.00	19.89	16.02	15.67	20.24	11.97	23.94
1930.00	19.88	16.05	15.62	20.31	12.15	23.78
1935.00	19.93	16.03	15.61	20.34	12.54	23.42
1940.00	19.90	16.07	15.63	20.34	12.73	23.24
1945.00	19.91	16.08	15.66	20.34	12.45	23.55
1950.00	19.90	16.12	15.65	20.37	12.14	23.88
1955.00	19.87	16.17	15.62	20.42	12.14	23.90

SCHWARZBECK MESS - ELEKTRONIK

An der Klinge 29 D-69250 Schönau Tel.: 06228/1001 Fax.: (49)6228/1003

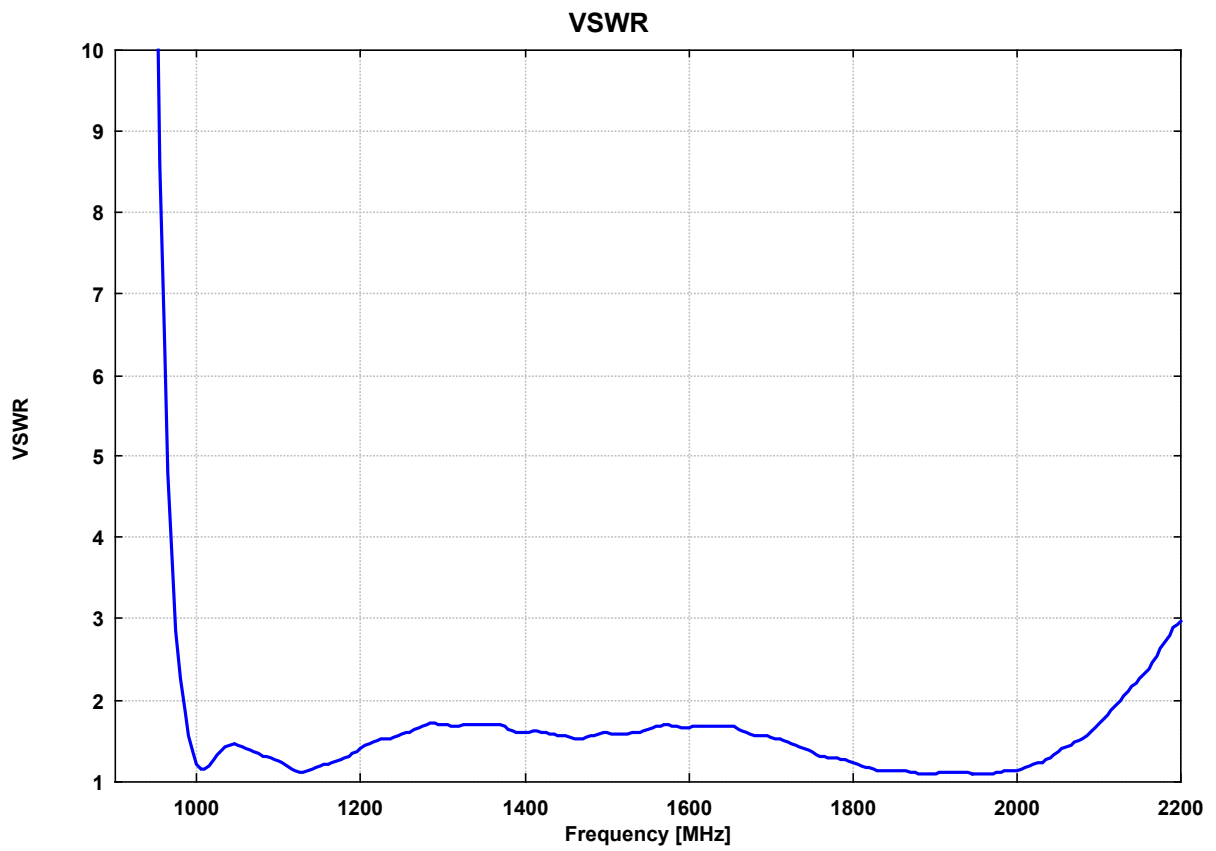
Standard Hornantenne HA 9250-12 Standard Horn Antenna HA 9250-12

Frequency	Gain(Isotr.) Farfield	Ant.-Factor Farfield	Gain(Isotr.) 3 m Aperture	Ant.-Factor 3 m Aperture	Gain(Isotr.) 1 m Aperture	Ant.-Factor 1 m Aperture
MHz	dBi	dB/m	dBi	dB/m	dBi	dB/m
1960.00	19.85	16.21	15.57	20.50	12.20	23.86
1965.00	19.80	16.29	15.49	20.60	12.28	23.81
1970.00	19.78	16.33	15.42	20.69	12.40	23.71
1975.00	19.74	16.40	15.42	20.71	12.29	23.85
1980.00	19.72	16.43	15.45	20.71	11.80	24.35
1985.00	19.67	16.51	15.40	20.78	11.51	24.67
1990.00	19.66	16.54	15.29	20.90	11.63	24.57
1995.00	19.62	16.60	15.25	20.97	11.90	24.32
2000.00	19.63	16.61	15.29	20.95	12.24	24.00
2005.00	19.62	16.64	15.35	20.91	12.60	23.67
2010.00	19.63	16.65	15.36	20.92	12.59	23.70
2015.00	19.66	16.65	15.37	20.94	12.14	24.16
2020.00	19.67	16.66	15.39	20.94	11.74	24.59
2025.00	19.68	16.67	15.37	20.98	11.65	24.70
2030.00	19.68	16.69	15.31	21.06	11.73	24.64
2035.00	19.65	16.74	15.28	21.11	11.92	24.47
2040.00	19.64	16.77	15.28	21.13	12.19	24.23
2045.00	19.58	16.85	15.24	21.19	12.12	24.32
2050.00	19.54	16.91	15.16	21.29	11.72	24.74
2055.00	19.46	17.01	15.07	21.41	11.32	25.16
2060.00	19.37	17.12	14.98	21.52	11.13	25.37
2065.00	19.31	17.21	14.92	21.60	11.18	25.34
2070.00	19.24	17.30	14.88	21.66	11.49	25.05
2075.00	19.22	17.34	14.86	21.70	11.76	24.80
2080.00	19.19	17.39	14.82	21.76	11.56	25.02
2085.00	19.17	17.43	14.77	21.83	11.23	25.37
2090.00	19.16	17.47	14.74	21.89	11.04	25.58
2095.00	19.14	17.50	14.72	21.92	10.96	25.69
2100.00	19.13	17.53	14.73	21.93	11.13	25.54
2105.00	19.12	17.56	14.76	21.92	11.60	25.09
2110.00	19.10	17.60	14.76	21.95	11.86	24.84
2115.00	19.08	17.65	14.71	22.01	11.63	25.10
2120.00	19.02	17.73	14.62	22.13	11.15	25.59
2125.00	18.94	17.83	14.52	22.25	10.69	26.08
2130.00	18.82	17.97	14.41	22.38	10.40	26.39
2135.00	18.71	18.10	14.31	22.50	10.53	26.28
2140.00	18.56	18.27	14.20	22.63	11.01	25.82
2145.00	18.44	18.41	14.08	22.77	11.21	25.64
2150.00	18.30	18.57	13.91	22.95	10.93	25.94
2155.00	18.14	18.74	13.75	23.14	10.53	26.36
2160.00	18.05	18.86	13.64	23.27	10.01	26.90
2165.00	17.94	18.99	13.62	23.31	9.70	27.23
2170.00	17.90	19.05	13.66	23.29	9.94	27.01
2175.00	17.88	19.09	13.65	23.32	10.55	26.42
2180.00	17.86	19.13	13.60	23.39	10.82	26.17
2185.00	17.88	19.13	13.56	23.45	10.64	26.37
2190.00	17.84	19.19	13.54	23.49	10.25	26.78
2195.00	17.86	19.18	13.49	23.56	9.94	27.11
2200.00	17.85	19.21	13.48	23.59	9.34	27.73

SCHWARZBECK MESS - ELEKTRONIK

An der Klinge 29 D-69250 Schönau Tel.: 06228/1001 Fax.: (49)6228/1003

Standard Hornantenne HA 9250-12
Standard Horn Antenna HA 9250-12

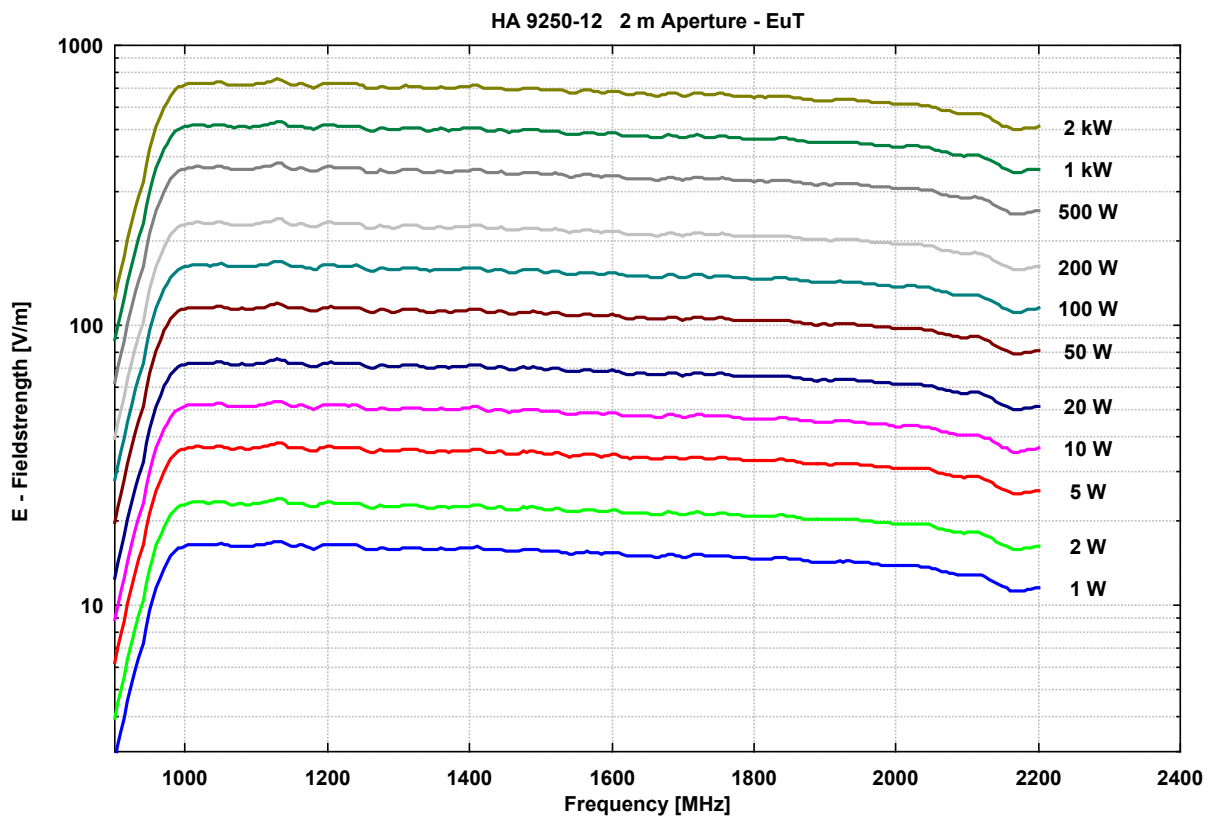
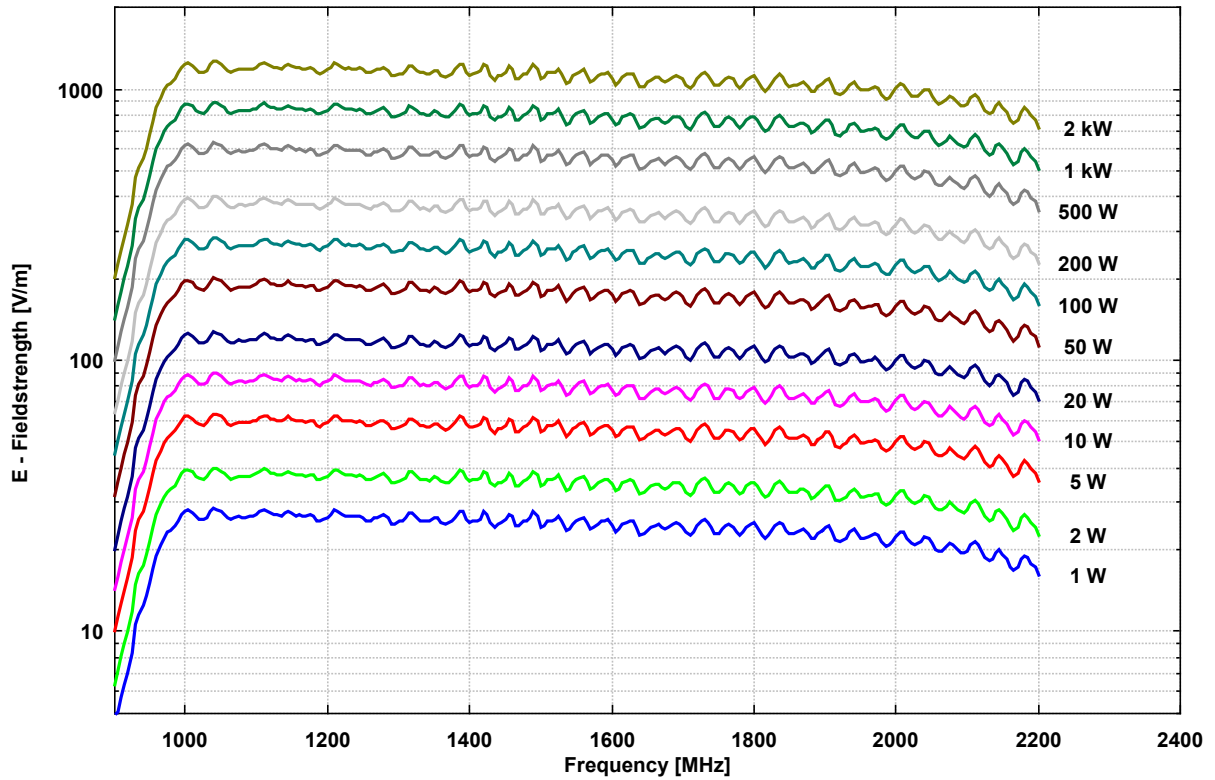


SCHWARZBECK MESS - ELEKTRONIK

An der Klinge 29 D-69250 Schönau Tel.: 06228/1001 Fax.: (49)6228/1003

Standard Hornantenne HA 9250-12 Standard Horn Antenna HA 9250-12

Erzeugte Elektrische Feldstärke vor der Antennenspitze
unmoduliert, Eingangsleistung an 7/16-Buchse, Reflexionsfreie Umgebung
*Generated Electrical Fieldstrength in front of Antenna Tip
no modulation, Input Power at 7/16-Connector, Anechoic Environmental Conditions*
HA 9250-12 1 m Aperture - EuT



SCHWARZBECK MESS - ELEKTRONIK

An der Klinge 29 D-69250 Schönau Tel.: 06228/1001 Fax.: (49)6228/1003

Standard Hornantenne HA 9250-12 Standard Horn Antenna HA 9250-12

Erzeugte Elektrische Feldstärke vor der Antennenspitze
unmoduliert, Eingangsleistung an 7/16-Buchse, Reflexionsfreie Umgebung
*Generated Electrical Fieldstrength in front of Antenna Tip
no modulation, Input Power at 7/16-Connector, Anechoic Environmental Conditions*

